

# AP4B1 Antibody



PACO42882

---

## Product Information

**Size:**

50ug

**Reactivity:**

Human

**Source:**

Rabbit

**Isotype:**

IgG

**Applications:**

ELISA, WB, IHC

**Recommended dilutions:**

ELISA:1:2000-1:10000, WB:1:500-1:2000,  
IHC:1:20-1:200

**Protein Background:**

Subunit of novel type of clathrin- or non-clathrin-associated protein coat involved in targeting proteins from the trans-Golgi network (TGN) to the endosomal-lysosomal system.

**Gene ID:**

AP4B1

**Uniprot**

Q9Y6B7

**Synonyms:**

AP-4 complex subunit beta-1 (AP-4 adaptor complex subunit beta) (Adaptor-related protein complex 4 subunit beta-1) (beta subunit of AP-4) (Beta4-adaptin), AP4B1

**Immunogen:**

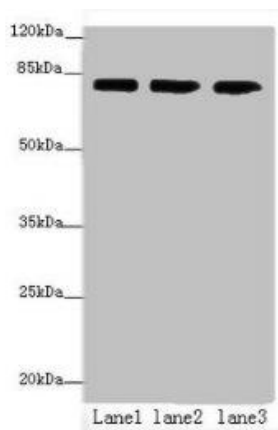
Recombinant Human AP-4 complex subunit beta-1 protein (201-500AA).

**Storage:**

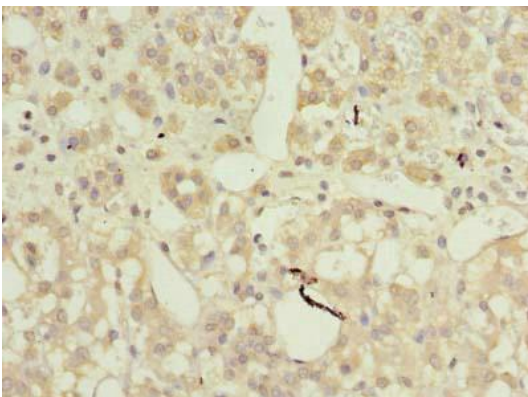
Preservative: 0.03% Proclin 300. Constituents: 50% Glycerol, 0.01M PBS, PH 7.4

## Product Images

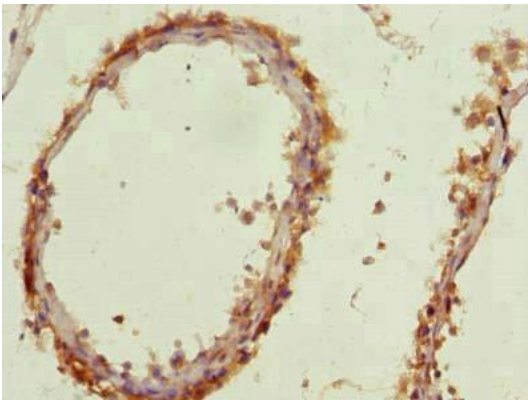
---



Western blot. All lanes: AP4B1 antibody at 3 $\mu$ g/ml. Lane 1: HepG2 whole cell lysate. Lane 2: U251 whole cell lysate. Lane 3: LO2 whole cell lysate. Secondary: Goat polyclonal to rabbit IgG at 1/10000 dilution. Predicted band size: 84, 35 kDa. Observed band size: 84 kDa.



Immunohistochemistry of paraffin-embedded human adrenal gland tissue using PACO42882 at dilution of 1:100.



Immunohistochemistry of paraffin-embedded human testis tissue using PACO42882 at dilution of 1:100.