

Product Information

Size:

50ul

Reactivity:

Human

Source:

Rabbit

Isotype:

IgG

Applications:

ELISA, WB, IHC

Recommended dilutions:

ELISA:1:2000-1:10000, WB:1:500-1:2000,
IHC:1:20-1:200

Protein Background:

Serine protease that shows proteolytic activity against a non-specific substrate beta-casein. Promotes or induces cell death either by direct binding to and inhibition of BIRC proteins (also called inhibitor of apoptosis proteins, IAPs), leading to an increase in caspase activity, or by a BIRC inhibition-independent, caspase-independent and serine protease activity-dependent mechanism. Cleaves THAP5 and promotes its degradation during apoptosis. Isoform 2 seems to be proteolytically inactive.

Gene ID:

HTRA2

Uniprot

O43464

Synonyms:

Serine protease HTRA2, mitochondrial (EC 3.4.21.108) (High temperature requirement protein A2) (HtrA2) (Omi stress-regulated endoprotease) (Serine protease 25) (Serine proteinase OMI), HTRA2, OMI PRSS25

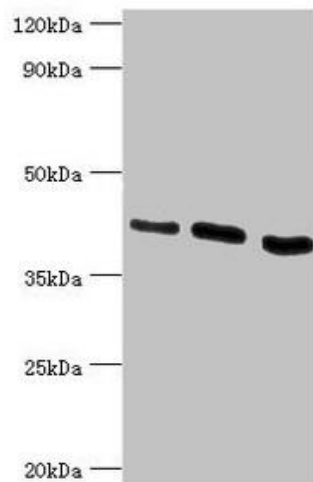
Immunogen:

Recombinant Human Serine protease HTRA2, mitochondrial protein (334-458AA).

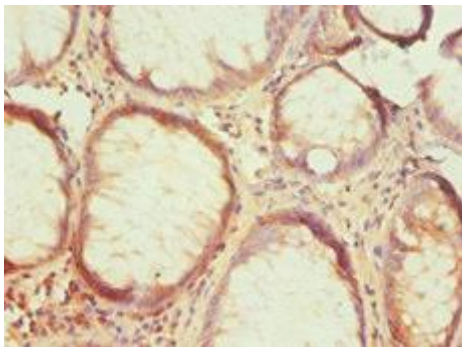
Storage:

PBS with 0.02% sodium azide, 50% glycerol, pH7.3.

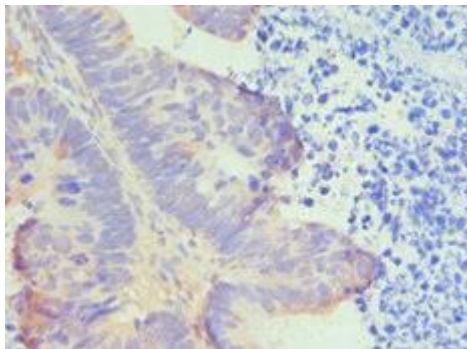
Product Images



Western blot. All lanes: HTRA2 antibody at 0.9 μ g/ml. Lane 1: HeLa whole cell lysate. Lane 2: U937 whole cell lysate. Lane 3: 293T whole cell lysate. Secondary. Goat polyclonal to rabbit IgG at 1/10000 dilution. Predicted band size: 49, 39, 47, 40 kDa. Observed band size: 39 kDa.



Immunohistochemistry of paraffin-embedded human colon cancer using PACO42906 at dilution of 1:100.



Immunohistochemistry of paraffin-embedded human ovarian cancer using PACO42906 at dilution of 1:100.