

IDH1 Antibody



PACO42912

Product Information

Size:

50ul

Reactivity:

Human, Mouse

Source:

Rabbit

Isotype:

IgG

Applications:

ELISA, WB, IHC

Recommended dilutions:

ELISA:1:2000-1:10000, WB:1:500-1:5000,
IHC:1:20-1:200

Protein Background:

Gene ID:

IDH1

Uniprot

O75874

Synonyms:

Isocitrate dehydrogenase [NADP] cytoplasmic (IDH) (EC 1.1.1.42) (Cytosolic NADP-isocitrate dehydrogenase) (IDP) (NADP(+)-specific ICDH) (Oxalosuccinate decarboxylase), IDH1, PICD

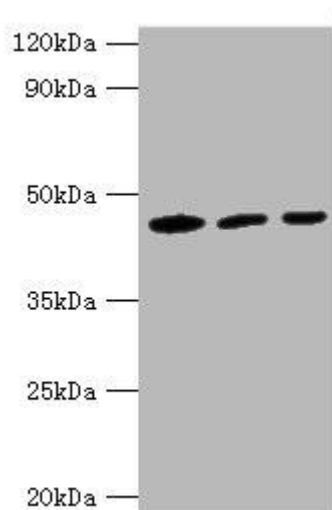
Immunogen:

Recombinant Human Isocitrate dehydrogenase [NADP] cytoplasmic protein (1-240AA).

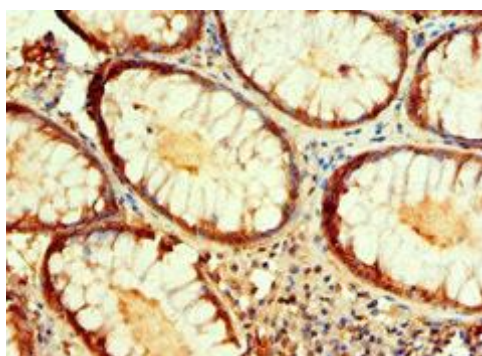
Storage:

PBS with 0.02% sodium azide, 50% glycerol, pH7.3.

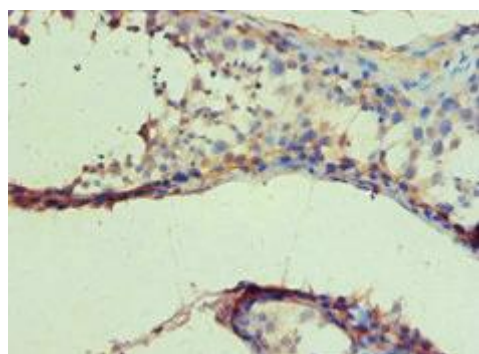
Product Images



Western blot. All lanes: IDH1 antibody at 3 μ g/ml. Lane 1: Mouse liver tissue. Lane 2: HeLa whole cell lysate. Lane 3: NIH/3T3 whole cell lysate. Secondary: Goat polyclonal to rabbit IgG at 1/10000 dilution. Predicted band size: 47 kDa. Observed band size: 47 kDa.



Immunohistochemistry of paraffin-embedded human colon cancer using PACO42912 at dilution of 1:100.



Immunohistochemistry of paraffin-embedded human testis tissue using PACO42912 at dilution of 1:100.