

EPM2A Antibody



PACO42914

Product Information

Size:

50ul

Reactivity:

Human

Source:

Rabbit

Isotype:

IgG

Applications:

ELISA, IHC

Recommended dilutions:

ELISA:1:2000-1:10000, IHC:1:20-1:200

Protein Background:

Gene ID:

EPM2A

Uniprot

O95278

Synonyms:

Laforin (EC 3.1.3. -) (EC 3.1.3.16) (EC 3.1.3.48) (Glucan phosphatase) (Glycogen phosphatase) (Lafora PTPase) (LAFPTPase), EPM2A

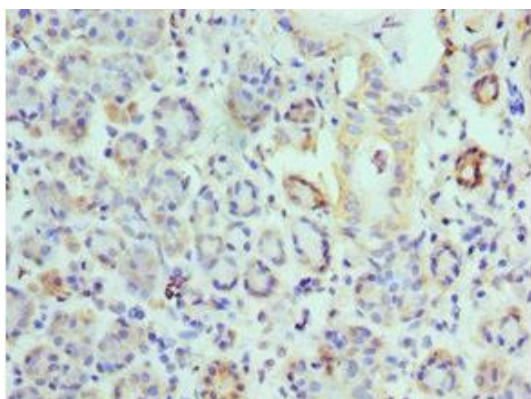
Immunogen:

Recombinant Human Laforin protein (244-331AA).

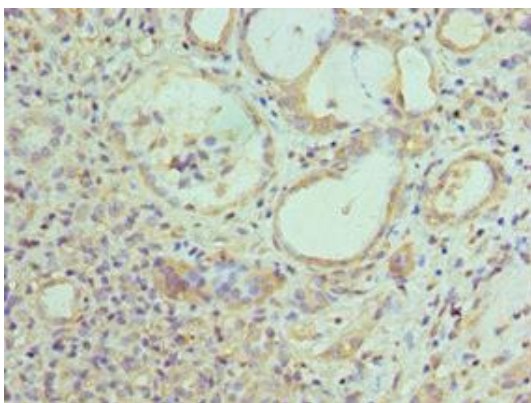
Storage:

PBS with 0.02% sodium azide, 50% glycerol, pH7.3.

Product Images



Immunohistochemistry of paraffin-embedded human salivary gland tissue using PACO42914 at dilution of 1:100.



Immunohistochemistry of paraffin-embedded human kidney tissue using PACO42914 at dilution of 1:100.