

# AMY2A Antibody



PACO42962

---

## Product Information

**Size:**

50ul

**Reactivity:**

Human, Mouse

**Source:**

Rabbit

**Isotype:**

IgG

**Applications:**

ELISA, WB, IHC

**Recommended dilutions:**

ELISA:1:2000-1:10000, WB:1:500-1:2000,  
IHC:1:20-1:200

**Protein Background:****Gene ID:**

AMY2A

**Uniprot**

P04746

**Synonyms:**

Pancreatic alpha-amylase (PA) (EC 3.2.1.1) (1,4-alpha-D-glucan glucohydrolase),  
AMY2A

**Immunogen:**

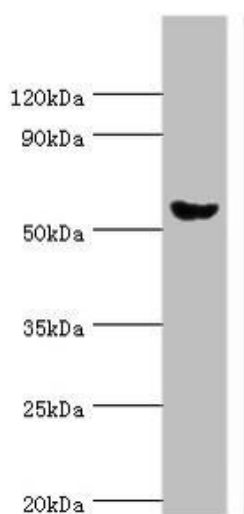
Recombinant Human Pancreatic alpha-amylase protein (242-511AA).

**Storage:**

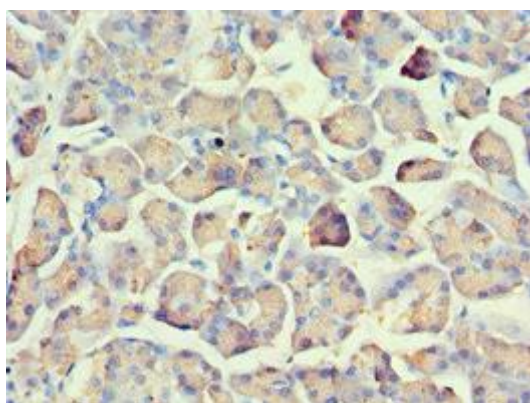
PBS with 0.02% sodium azide, 50% glycerol, pH7.3.

## Product Images

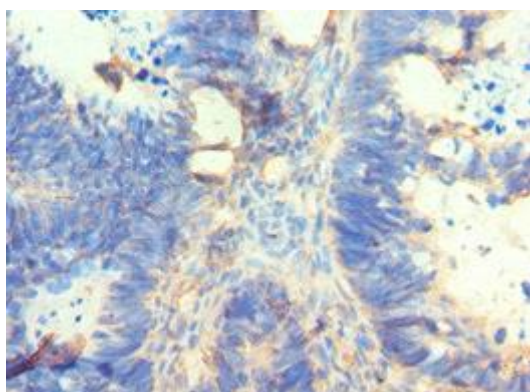
---



Western blot. All lanes: Pancreatic alpha-amylase antibody at 6µg/ml + Mouse liver tissue. Secondary. Goat polyclonal to rabbit IgG at 1/10000 dilution. Predicted band size: 58, 31 kDa. Observed band size: 58 kDa.



Immunohistochemistry of paraffin-embedded human pancreatic tissue using PACO42962 at dilution of 1:100.



Immunohistochemistry of paraffin-embedded human ovarian cancer using PACO42962 at dilution of 1:100.