

## Product Information

**Size:**

50ul

**Reactivity:**

Human

**Source:**

Rabbit

**Isotype:**

IgG

**Applications:**

ELISA, WB, IHC

**Recommended dilutions:**

ELISA:1:2000-1:10000, WB:1:500-1:2000,  
IHC:1:20-1:200

**Protein Background:**

Ligand of the T-lymphocyte CD2 glycoprotein. This interaction is important in mediating thymocyte interactions with thymic epithelial cells, antigen-independent and -dependent interactions of T-lymphocytes with target cells and antigen-presenting cells and the T-lymphocyte rosetting with erythrocytes. In addition, the LFA-3/CD2 interaction may prime response by both the CD2+ and LFA-3+ cells.

**Gene ID:**

CD58

**Uniprot**

P19256

**Synonyms:**

Lymphocyte function-associated antigen 3 (Ag3) (Surface glycoprotein LFA-3) (CD antigen CD58), CD58, LFA3

**Immunogen:**

Recombinant Human Lymphocyte function-associated antigen 3 protein (40-220AA).

**Storage:**

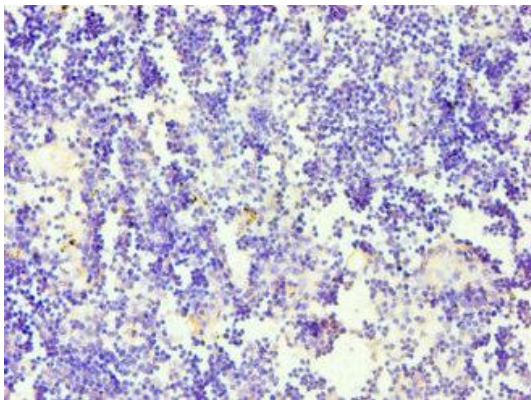
PBS with 0.02% sodium azide, 50% glycerol, pH7.3.

## Product Images

---



Western blot. All lanes: Lymphocyte function-associated antigen 3 antibody at 2 $\mu$ g/ml. Lane 1: Hela whole cell lysate. Lane 2: Jurkat whole cell lysate. Secondary: Goat polyclonal to rabbit IgG at 1/10000 dilution. Predicted band size: 29, 27, 28 kDa. Observed band size: 29 kDa.



Immunohistochemistry of paraffin-embedded human thymus tissue using PACO42963 at dilution of 1:100.