

MCM6 Antibody



PACO43005

Product Information

Size:

50ul

Reactivity:

Human

Source:

Rabbit

Isotype:

IgG

Applications:

ELISA, WB, IHC

Recommended dilutions:

ELISA:1:2000-1:10000, WB:1:500-1:2000,
IHC:1:20-1:200

Protein Background:

Acts as component of the MCM2-7 complex (MCM complex) which is the putative replicative helicase essential for 'once per cell cycle' DNA replication initiation and elongation in eukaryotic cells. The active ATPase sites in the MCM2-7 ring are formed through the interaction surfaces of two neighboring subunits such that a critical structure of a conserved arginine finger motif is provided in trans relative to the ATP-binding site of the Walker A box of the adjacent subunit. The six ATPase active sites, however, are likely to contribute differentially to the complex helicase activity.

Gene ID:

MCM6

Uniprot

Q14566

Synonyms:

DNA replication licensing factor MCM6 (EC 3.6.4.12) (p105MCM), MCM6

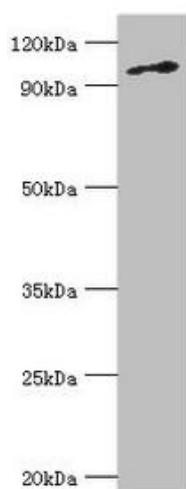
Immunogen:

Recombinant Human DNA replication licensing factor MCM6 protein (562-821AA).

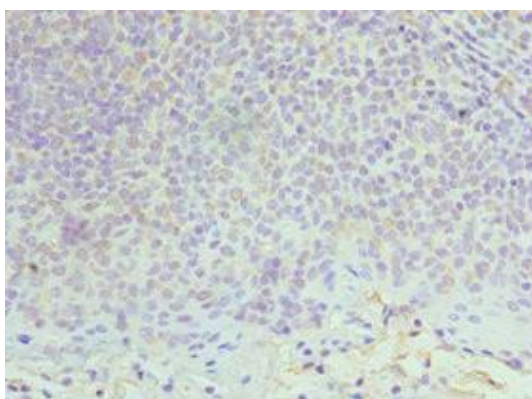
Storage:

PBS with 0.02% sodium azide, 50% glycerol, pH7.3.

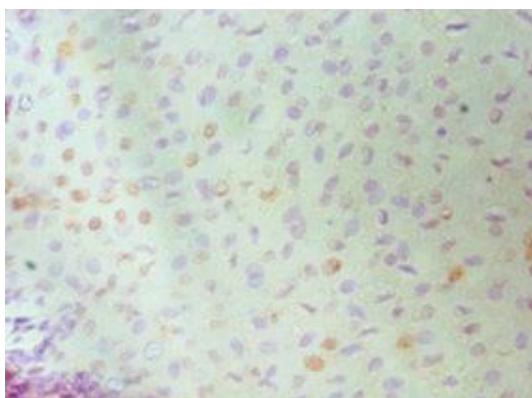
Product Images



Western blot. All lanes: DNA replication licensing factor MCM6 antibody at 3 μ g/ml + Jurkat whole cell lysate. Secondary. Goat polyclonal to rabbit IgG at 1/10000 dilution. Predicted band size: 93 kDa. Observed band size: 93 kDa.



Immunohistochemistry of paraffin-embedded human tonsil tissue using PACO43005 at dilution of 1:100.



Immunohistochemistry of paraffin-embedded human cervical cancer using PACO43005 at dilution of 1:100.