

MAD2L1 Antibody



PACO43025

Product Information

Size:

50ul

Reactivity:

Human

Source:

Rabbit

Isotype:

IgG

Applications:

ELISA, IHC

Recommended dilutions:

ELISA:1:2000-1:10000, IHC:1:20-1:200

Protein Background:

Component of the spindle-assembly checkpoint that prevents the onset of anaphase until all chromosomes are properly aligned at the metaphase plate. Required for the execution of the mitotic checkpoint which monitors the process of kinetochore-spindle attachment and inhibits the activity of the anaphase promoting complex by sequestering CDC20 until all chromosomes are aligned at the metaphase plate.

Gene ID:

MAD2L1

Uniprot

Q13257

Synonyms:

Mitotic spindle assembly checkpoint protein MAD2A (HsMAD2) (Mitotic arrest deficient 2-like protein 1) (MAD2-like protein 1), MAD2L1, MAD2

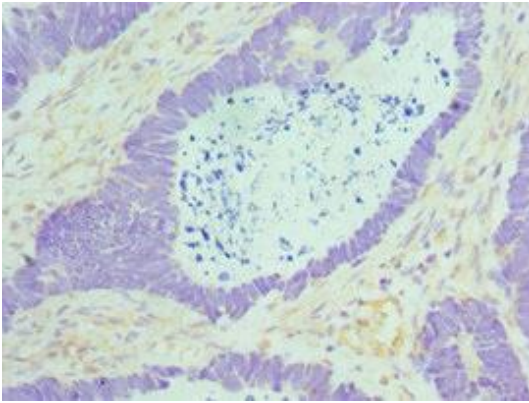
Immunogen:

Recombinant Human Mitotic spindle assembly checkpoint protein MAD2A protein (1-205AA).

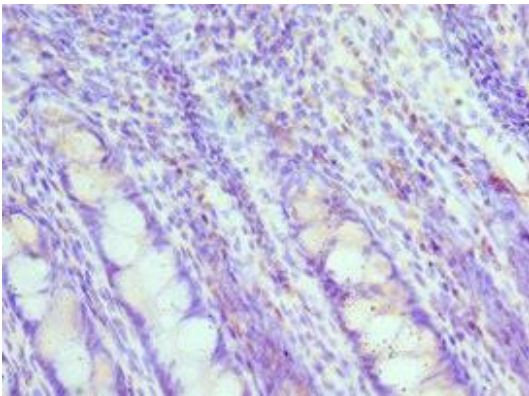
Storage:

PBS with 0.02% sodium azide, 50% glycerol, pH7.3.

Product Images



Immunohistochemistry of paraffin-embedded human ovarian cancer using PACO43025 at dilution of 1:100.



Immunohistochemistry of paraffin-embedded human colon cancer using PACO43025 at dilution of 1:100.