

IL11RA Antibody



PACO43026

Product Information

Size:

50ul

Reactivity:

Human

Source:

Rabbit

Isotype:

IgG

Applications:

ELISA, IHC

Recommended dilutions:

ELISA:1:2000-1:10000, IHC:1:20-1:200

Protein Background:

Receptor for interleukin-11. The receptor systems for IL6, LIF, OSM, CNTF, IL11 and CT1 can utilize IL6ST for initiating signal transmission. The IL11/IL11RA/IL6ST complex may be involved in the control of proliferation and/or differentiation of skeletogenic progenitor or other mesenchymal cells. Essential for the normal development of craniofacial bones and teeth. Restricts suture fusion and tooth number.

Gene ID:

IL11RA

Uniprot

Q14626

Synonyms:

Interleukin-11 receptor subunit alpha (IL-11 receptor subunit alpha) (IL-11R subunit alpha) (IL-11R-alpha) (IL-11RA), IL11RA

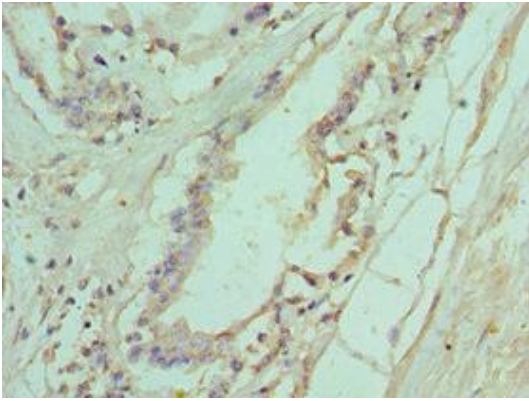
Immunogen:

Recombinant Human Interleukin-11 receptor subunit α protein (30-290AA).

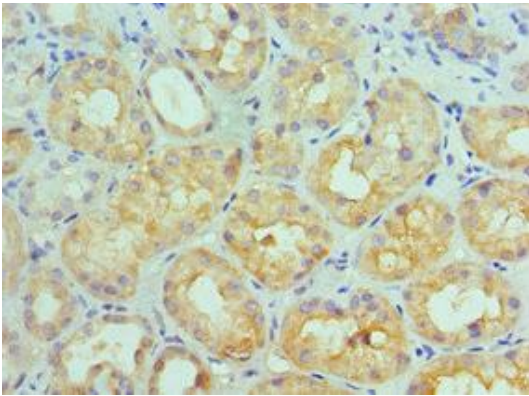
Storage:

PBS with 0.02% sodium azide, 50% glycerol, pH7.3.

Product Images



Immunohistochemistry of paraffin-embedded human prostate tissue using PACO43026 at dilution of 1:100.



Immunohistochemistry of paraffin-embedded human kidney tissue using PACO43026 at dilution of 1:100.