

ETV6 Antibody



PACO43027

Product Information

Size:

50ul

Reactivity:

Human

Source:

Rabbit

Isotype:

IgG

Applications:

ELISA, IHC

Recommended dilutions:

ELISA:1:2000-1:10000, IHC:1:20-1:200

Protein Background:

Transcriptional repressor; binds to the DNA sequence 5'-CCGGAAGT-3'.

Gene ID:

ETV6

Uniprot

P41212

Synonyms:

Transcription factor ETV6 (ETS translocation variant 6) (ETS-related protein Tel1) (Tel), ETV6, TEL TEL1

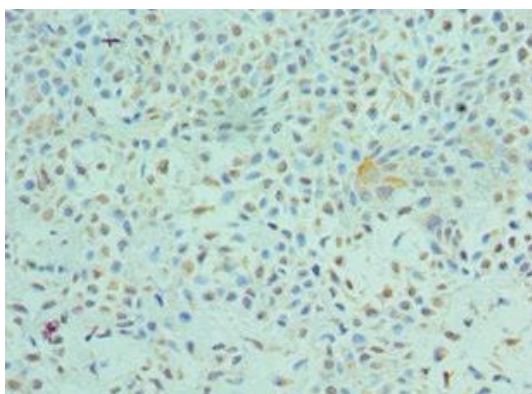
Immunogen:

Recombinant Human Transcription factor ETV6 protein (1-300AA).

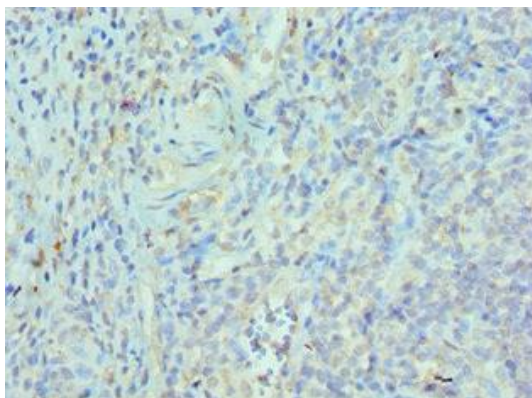
Storage:

PBS with 0.02% sodium azide, 50% glycerol, pH7.3.

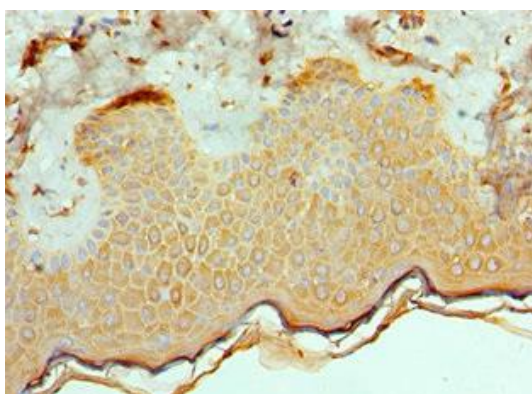
Product Images



Immunohistochemistry of paraffin-embedded human breast cancer using PACO43027 at dilution of 1:100.



Immunohistochemistry of paraffin-embedded human epityphlon tissue using PACO43027 at dilution of 1:100.



Immunohistochemistry of paraffin-embedded human skin tissue using PACO43027 at dilution of 1:100.