

ST14 Antibody



PACO43032

Product Information

Size:

50ul

Reactivity:

Human

Source:

Rabbit

Isotype:

IgG

Applications:

ELISA, IHC

Recommended dilutions:

ELISA:1:2000-1:10000, IHC:1:20-1:200

Protein Background:

Degrades extracellular matrix. Proposed to play a role in breast cancer invasion and metastasis. Exhibits trypsin-like activity as defined by cleavage of synthetic substrates with Arg or Lys as the P1 site. Involved in the terminal differentiation of keratinocytes through prostaticin (PRSS8) activation and filaggrin (FLG) processing.

Gene ID:

ST14

Uniprot

Q9Y5Y6

Synonyms:

Suppressor of tumorigenicity 14 protein (EC 3.4.21.109) (Matriptase) (Membrane-type serine protease 1) (MT-SP1) (Prostamin) (Serine protease 14) (Serine protease TADG-15) (Tumor-associated differentially-expressed gene 15 protein), ST14, PRSS14 SNC19 TADG15

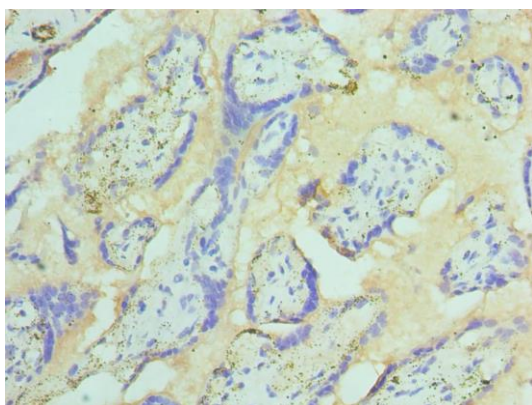
Immunogen:

Recombinant Human Suppressor of tumorigenicity 14 protein (566-855AA).

Storage:

PBS with 0.02% sodium azide, 50% glycerol, pH7.3.

Product Images



Immunohistochemistry of paraffin-embedded human placenta tissue using PACO43032 at dilution of 1:100.