

Product Information

Size:

50ul

Reactivity:

Human

Source:

Rabbit

Isotype:

IgG

Applications:

ELISA, IHC

Recommended dilutions:

ELISA:1:2000-1:10000, IHC:1:20-1:200

Protein Background:

In complex with KIF18B, constitutes the major microtubule plus-end depolymerizing activity in mitotic cells. Regulates the turnover of microtubules at the kinetochore and functions in chromosome segregation during mitosis.

Gene ID:

KIF2C

Uniprot

Q99661

Synonyms:

Kinesin-like protein KIF2C (Kinesin-like protein 6) (Mitotic centromere-associated kinesin) (MCAK), KIF2C, KNSL6

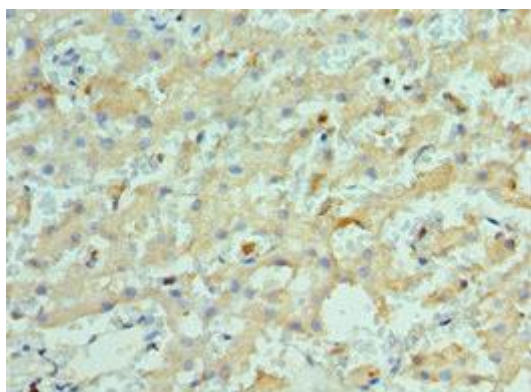
Immunogen:

Recombinant Human Kinesin-like protein KIF2C protein (1-190AA).

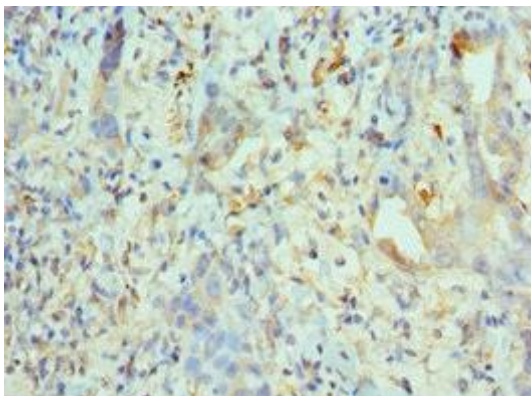
Storage:

PBS with 0.02% sodium azide, 50% glycerol, pH7.3.

Product Images



Immunohistochemistry of paraffin-embedded human liver cancer using PACO43039 at dilution of 1:100.



Immunohistochemistry of paraffin-embedded human lung cancer using PACO43039 at dilution of 1:100.