

PACO43041

Product Information

Size:

50ul

Reactivity:

Human

Source:

Rabbit

Isotype:

IgG

Applications:

ELISA, IHC

Recommended dilutions:

ELISA:1:2000-1:10000, IHC:1:20-1:200

Protein Background:

May play a role in apoptosis. Isoform 1 seems to be the main initiator.

Gene ID:

BMF

Uniprot

Q96LC9

Synonyms:

Bcl-2-modifying factor, BMF

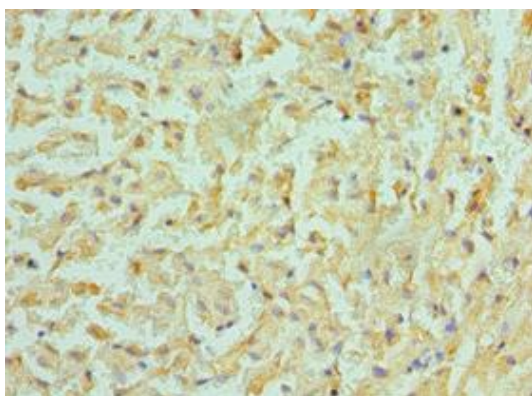
Immunogen:

Recombinant Human Bcl-2-modifying factor protein (1-184AA).

Storage:

PBS with 0.02% sodium azide, 50% glycerol, pH7.3.

Product Images



Immunohistochemistry of paraffin-embedded human liver cancer using PACO43041 at dilution of 1:100.