

PACO43042

---

## Product Information

**Size:**

50ul

**Reactivity:**

Human

**Source:**

Rabbit

**Isotype:**

IgG

**Applications:**

ELISA, IHC

**Recommended dilutions:**

ELISA:1:2000-1:10000, IHC:1:20-1:200

**Protein Background:**

May play a role in apoptosis. Isoform 1 seems to be the main initiator.

**Gene ID:**

BMF

**Uniprot**

Q96LC9

**Synonyms:**

Bcl-2-modifying factor, BMF

**Immunogen:**

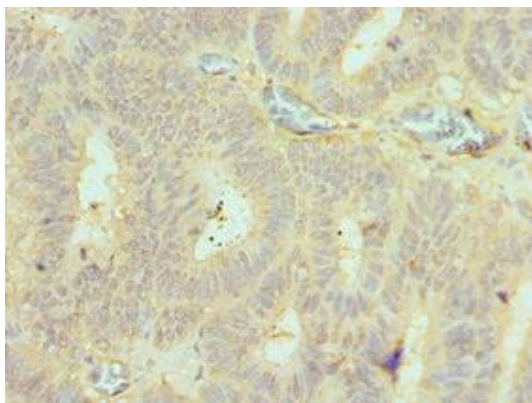
Recombinant Human Bcl-2-modifying factor protein (1-184AA).

**Storage:**

PBS with 0.02% sodium azide, 50% glycerol, pH7.3.

## Product Images

---



Immunohistochemistry of paraffin-embedded human colon cancer using PACO43042 at dilution of 1:100.