

Product Information

Size:

50ul

Reactivity:

Human, Mouse

Source:

Rabbit

Isotype:

IgG

Applications:

ELISA, WB, IHC

Recommended dilutions:

ELISA:1:2000-1:10000, WB:1:500-1:2000,
IHC:1:20-1:200

Protein Background:

Filament-forming cytoskeletal GTPase. Required for normal organization of the actin cytoskeleton. Required for normal progress through mitosis. Involved in cytokinesis. Required for normal association of CENPE with the kinetochore. Plays a role in ciliogenesis and collective cell movements.

Gene ID:

39326

Uniprot

Q16181

Synonyms:

Septin-7 (CDC10 protein homolog), SEPT7, CDC10

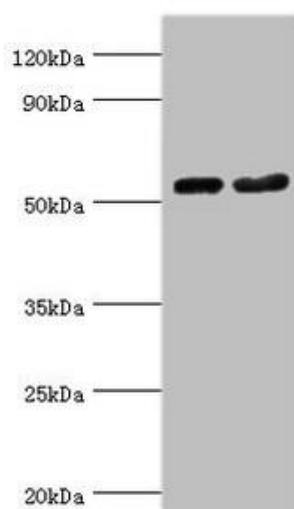
Immunogen:

Recombinant Human Septin-7 protein (308-437AA).

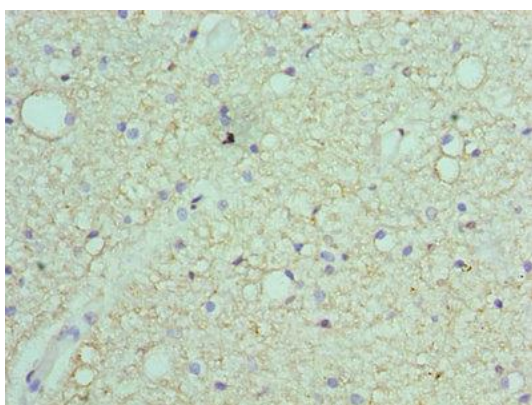
Storage:

PBS with 0.02% sodium azide, 50% glycerol, pH7.3.

Product Images



Western blot. All lanes: Septin-7 antibody at 9 μ g/ml. Lane 1: HeLa whole cell lysate. Lane 2: Mouse gonad tissue. Secondary: Goat polyclonal to rabbit IgG at 1/10000 dilution. Predicted band size: 51 kDa. Observed band size: 51 kDa.



Immunohistochemistry of paraffin-embedded human brain tissue using PACO43053 at dilution of 1:100.