

FGF1 Antibody



PACO43059

Product Information

Size:

50ul

Reactivity:

Human

Source:

Rabbit

Isotype:

IgG

Applications:

ELISA, IHC, IF

Recommended dilutions:

ELISA:1:2000-1:10000, IHC:1:20-1:500,
IF:1:50-1:200

Protein Background:

Plays an important role in the regulation of cell survival, cell division, angiogenesis, cell differentiation and cell migration. Functions as potent mitogen in vitro.

Gene ID:

FGF1

Uniprot

P05230

Synonyms:

Fibroblast growth factor 1 (FGF-1) (acid, c fibroblast growth factor) (aFGF) (Endothelial cell growth factor) (ECGF) (Heparin-binding growth factor 1) (HBGF-1), FGF1, FGFA

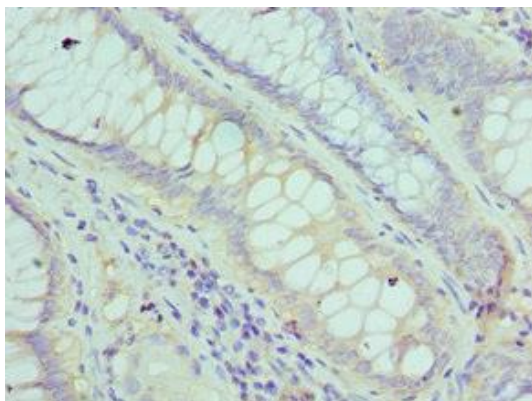
Immunogen:

Recombinant Human Fibroblast growth factor 1 protein (16-155AA).

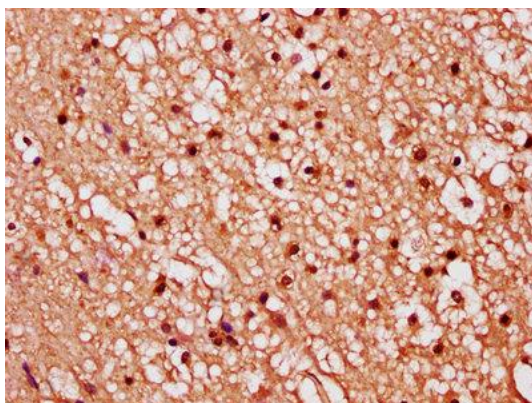
Storage:

PBS with 0.02% sodium azide, 50% glycerol, pH7.3.

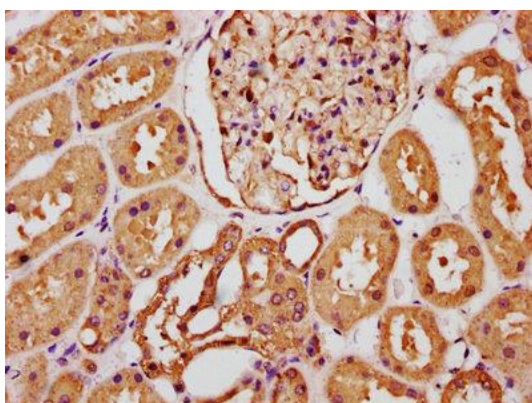
Product Images



Immunohistochemistry of paraffin-embedded human colon cancer using PACO43059 at dilution of 1:100.



IHC image of PACO43059 diluted at 1:289 and staining in paraffin-embedded human brain tissue performed on a Leica Bond™ system. After dewaxing and hydration, antigen retrieval was mediated by high pressure in a citrate buffer (pH 6.0). Section was blocked with 10% normal goat serum 30min at RT. Then primary antibody (1% BSA) was incubated at 4°C overnight. The primary is detected by a biotinylated secondary antibody and visualized using an HRP conjugated SP system.



IHC image of PACO43059 diluted at 1:289 and staining in paraffin-embedded human kidney tissue performed on a Leica Bond™ system. After dewaxing and hydration, antigen retrieval was mediated by high pressure in a citrate buffer (pH 6.0). Section was blocked with 10% normal goat serum 30min at RT. Then primary antibody (1% BSA) was incubated at 4°C overnight. The primary is detected by a biotinylated secondary antibody and visualized using an HRP conjugated SP system.