

EZH2 Antibody



PACO43061

Product Information

Size:

50ul

Reactivity:

Human, Mouse

Source:

Rabbit

Isotype:

IgG

Applications:

ELISA, WB

Recommended dilutions:

ELISA:1:2000-1:10000, WB:1:500-1:5000

Protein Background:

Gene ID:

EZH2

Uniprot

Q15910

Synonyms:

Histone-lysine N-methyltransferase EZH2 (EC 2.1.1.43) (ENX-1) (Enhancer of zeste homolog 2) (Lysine N-methyltransferase 6), EZH2, KMT6

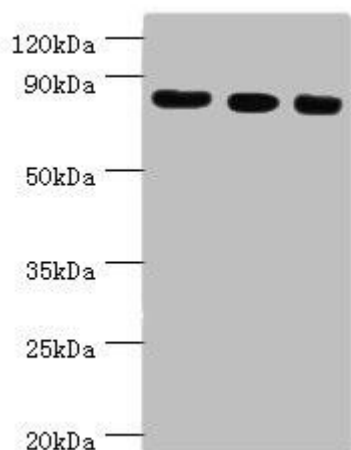
Immunogen:

Recombinant Human Histone-lysine N-methyltransferase EZH2 protein (1-250AA).

Storage:

PBS with 0.02% sodium azide, 50% glycerol, pH7.3.

Product Images



Western blot. All lanes: Histone-lysine N-methyltransferase EZH2 antibody at 12 μ g/ml. Lane 1: A431 whole cell lysate. Lane 2: Jurkat whole cell lysate. Lane 3: Mouse kidney tissue. Secondary. Goat polyclonal to rabbit IgG at 1/10000 dilution. Predicted band size: 86, 87, 82, 85, 80 kDa. Observed band size: 86 kDa.