

# SSX2 Antibody



PACO43067

---

## Product Information

**Size:**

50ul

**Reactivity:**

Human

**Source:**

Rabbit

**Isotype:**

IgG

**Applications:**

ELISA, WB, IHC

**Recommended dilutions:**

ELISA:1:2000-1:10000, WB:1:200-1:1000,  
IHC:1:20-1:200

**Protein Background:**

Could act as a modulator of transcription.

**Gene ID:**

SSX2

**Uniprot**

Q16385

**Synonyms:**

Protein SSX2 (Cancer/testis antigen 5.2) (CT5.2) (Synovial sarcoma, X breakpoint 2) (Tumor antigen HOM-MEL-40), SSX2; SSX2B, SSX2A;

**Immunogen:**

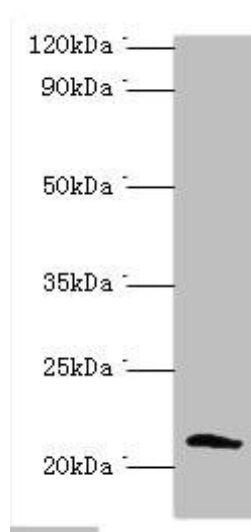
Recombinant Human Protein SSX2 protein (1-188AA).

**Storage:**

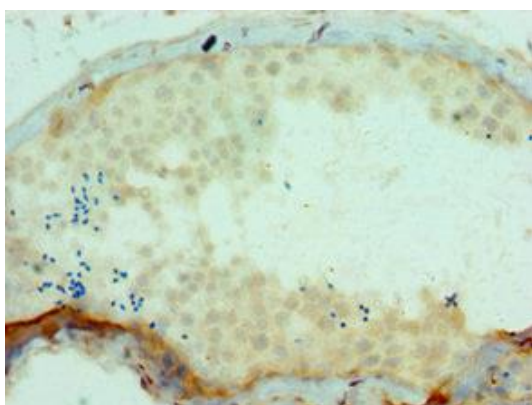
PBS with 0.02% sodium azide, 50% glycerol, pH7.3.

## Product Images

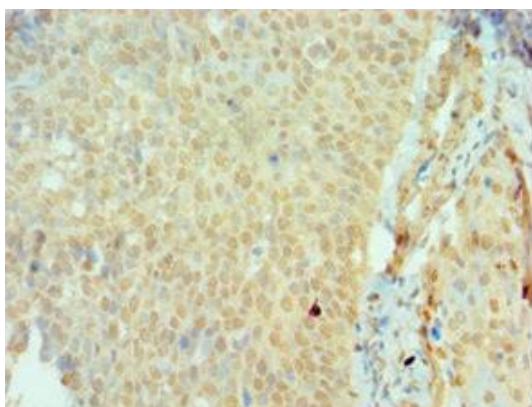
---



Western blot. All lanes: Protein SSX2 antibody at 2 $\mu$ g/ml + MDA-MB-231 whole cell lysate. Secondary. Goat polyclonal to rabbit IgG at 1/10000 dilution. Predicted band size: 22, 26 kDa. Observed band size: 22 kDa.



Immunohistochemistry of paraffin-embedded human testis tissue using PACO43067 at dilution of 1:100.



Immunohistochemistry of paraffin-embedded human cervical cancer using PACO43067 at dilution of 1:100.