

PACO43091

---

## Product Information

**Size:**

50ul

**Reactivity:**

Human

**Source:**

Rabbit

**Isotype:**

IgG

**Applications:**

ELISA, WB, IHC

**Recommended dilutions:**

ELISA:1:2000-1:10000, WB:1:200-1:2000,  
IHC:1:20-1:200

**Protein Background:**

Plays an essential role in autophagy: interacts with ATG12-ATG5 to mediate the conjugation of phosphatidylethanolamine (PE) to LC3 (MAP1LC3A, MAP1LC3B or MAP1LC3C), to produce a membrane-bound activated form of LC3 named LC3-II. Thereby, controls the elongation of the nascent autophagosomal membrane.

**Gene ID:**

ATG16L1

**Uniprot**

Q676U5

**Synonyms:**

Autophagy-related protein 16-1 (APG16-like 1), ATG16L1, APG16L

**Immunogen:**

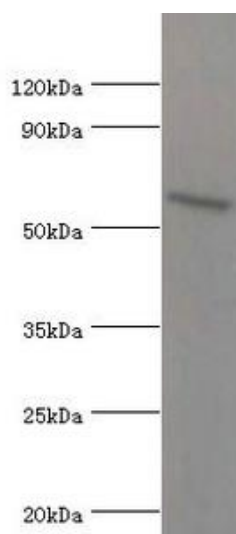
Recombinant Human Autophagy-related protein 16-1 protein (90-300AA).

**Storage:**

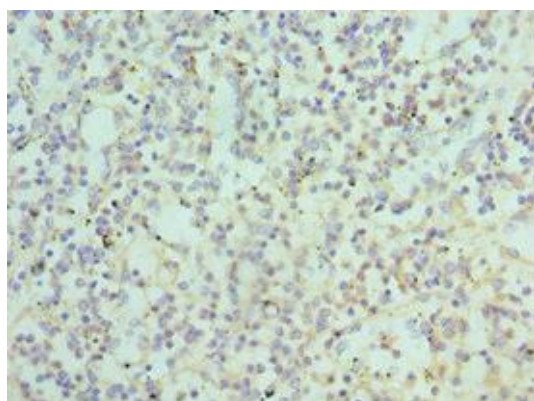
PBS with 0.02% sodium azide, 50% glycerol, pH7.3.

## Product Images

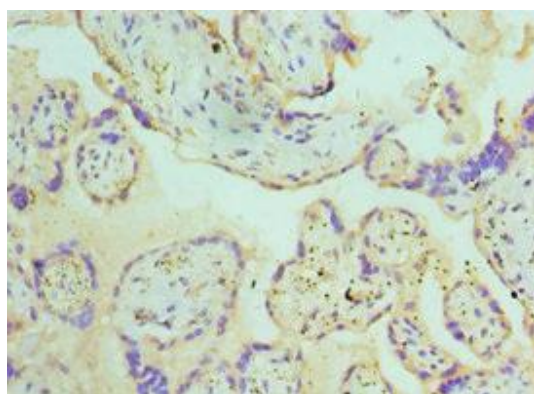
---



Western blot. All lanes: ATG16L1 antibody at 2 $\mu$ g/ml + MCF-7 whole cell lysate. Secondary. Goat polyclonal to rabbit IgG at 1/10000 dilution. Predicted band size: 69, 67, 54, 48, 50 kDa. Observed band size: 69 kDa.



Immunohistochemistry of paraffin-embedded human spleen tissue using PACO43091 at dilution of 1:100.



Immunohistochemistry of paraffin-embedded human placenta tissue using PACO43091 at dilution of 1:100.