

ADD1 Antibody



PACO43108

Product Information

Size:

50ul

Reactivity:

Human

Source:

Rabbit

Isotype:

IgG

Applications:

ELISA, IHC

Recommended dilutions:

ELISA:1:2000-1:10000, IHC:1:20-1:200

Protein Background:

Membrane-cytoskeleton-associated protein that promotes the assembly of the spectrin-actin network. Binds to calmodulin.

Gene ID:

ADD1

Uniprot

P35611

Synonyms:

Alpha-adducin (Erythrocyte adducin subunit alpha), ADD1, ADDA

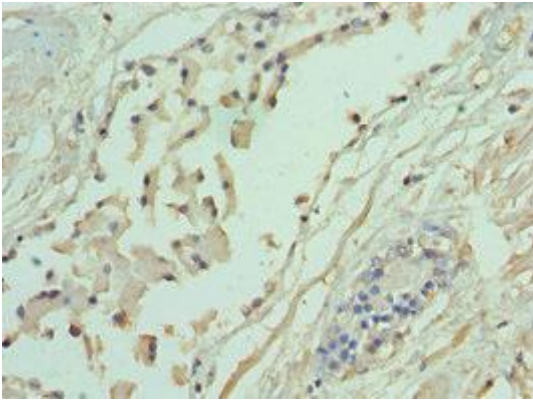
Immunogen:

Recombinant Human Alpha-adducin protein (60-300AA).

Storage:

PBS with 0.02% sodium azide, 50% glycerol, pH7.3.

Product Images



Immunohistochemistry of paraffin-embedded human prostate tissue using PACO43108 at dilution of 1:100.