

ASF1A Antibody



PACO43112

Product Information

Size:

50ul

Reactivity:

Human

Source:

Rabbit

Isotype:

IgG

Applications:

ELISA, WB, IHC

Recommended dilutions:

ELISA:1:2000-1:10000, WB:1:200-1:1000,
IHC:1:20-1:200

Protein Background:

Histone chaperone that facilitates histone deposition and histone exchange and removal during nucleosome assembly and disassembly. Cooperates with chromatin assembly factor 1 (CAF-1) to promote replication-dependent chromatin assembly and with HIRA to promote replication-independent chromatin assembly. Required for the formation of senescence-associated heterochromatin foci (SAHF) and efficient senescence-associated cell cycle exit.

Gene ID:

ASF1A

Uniprot

Q9Y294

Synonyms:

Histone chaperone ASF1A (Anti-silencing function protein 1 homolog A) (hAsf1) (hAsf1a) (CCG1-interacting factor A) (CIA) (hCIA), ASF1A

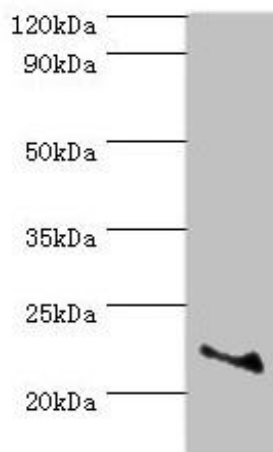
Immunogen:

Recombinant Human Histone chaperone ASF1A protein (1-204AA).

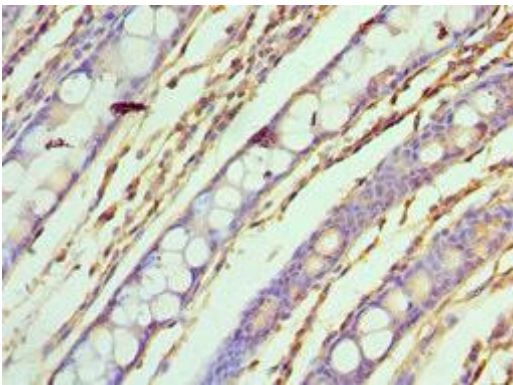
Storage:

PBS with 0.02% sodium azide, 50% glycerol, pH7.3.

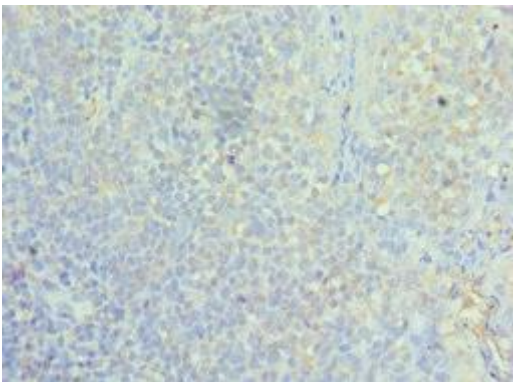
Product Images



Western blot. All lanes: ASF1A antibody at 2 μ g/ml + Jurkat whole cell lysate. Secondary. Goat polyclonal to rabbit IgG at 1/10000 dilution. Predicted band size: 23 kDa. Observed band size: 23 kDa.



Immunohistochemistry of paraffin-embedded human colon tissue using PACO43112 at dilution of 1:100.



Immunohistochemistry of paraffin-embedded human tonsil tissue using PACO43112 at dilution of 1:100.