

# AMY1A Antibody



PACO43124

---

## Product Information

**Size:**

50ul

**Reactivity:**

Human, Rat

**Source:**

Rabbit

**Isotype:**

IgG

**Applications:**

ELISA, WB

**Recommended dilutions:**

ELISA:1:2000-1:10000, WB:1:500-1:2000

**Protein Background:**

**Gene ID:**

AMY1A

**Uniprot**

P04745

**Synonyms:**

Alpha-amylase 1 (EC 3.2.1.1) (1,4-alpha-D-glucan glucohydrolase 1) (Salivary alpha-amylase), AMY1A; AMY1B; AMY1C, AMY1; AMY1; AMY1

**Immunogen:**

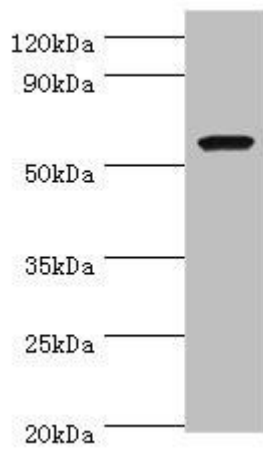
Recombinant Human Alpha-amylase 1 protein (16-200AA).

**Storage:**

PBS with 0.02% sodium azide, 50% glycerol, pH7.3.

## Product Images

---



Western blot. All lanes: AMY1A antibody at 7 $\mu$ g/ml + Rat heart tissue. Secondary. Goat polyclonal to rabbit IgG at 1/10000 dilution. Predicted band size: 58 kDa. Observed band size: 58 kDa.