

# CADM1 Antibody



PACO43134

---

## Product Information

**Size:**

50ul

**Reactivity:**

Human

**Source:**

Rabbit

**Isotype:**

IgG

**Applications:**

ELISA, IHC

**Recommended dilutions:**

ELISA:1:2000-1:10000, IHC:1:20-1:200

**Protein Background:**

**Gene ID:**

CADM1

**Uniprot**

Q9BY67

**Synonyms:**

Cell adhesion molecule 1 (Immunoglobulin superfamily member 4) (IgSF4) (Nectin-like protein 2) (NECL-2) (Spermatogenic immunoglobulin superfamily) (SgIgSF) (Synaptic cell adhesion molecule) (SynCAM) (Tumor suppressor in lung cancer 1) (TSLC-1), CADM1, IGSF4 IGSF4A NECL2 SYNCAM TSLC1

**Immunogen:**

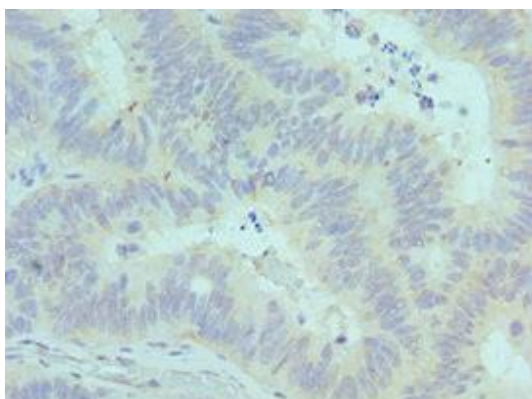
Recombinant Human Cell adhesion molecule 1 protein (45-344AA).

**Storage:**

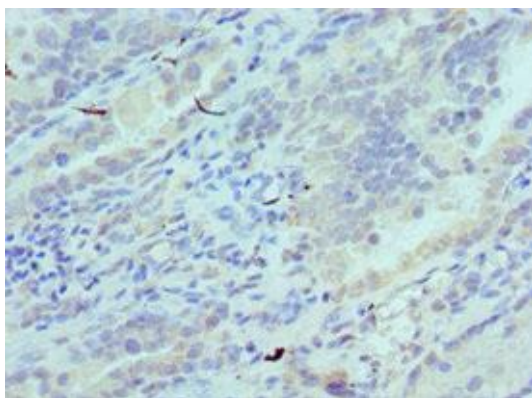
PBS with 0.02% sodium azide, 50% glycerol, pH7.3.

## Product Images

---



Immunohistochemistry of paraffin-embedded human colon cancer using PACO43134 at dilution of 1:100.



Immunohistochemistry of paraffin-embedded human lung cancer using PACO43134 at dilution of 1:100.