

# ATP6V1B1 Antibody



PACO43166

---

## Product Information

**Size:**

50ul

**Reactivity:**

Human

**Source:**

Rabbit

**Isotype:**

IgG

**Applications:**

ELISA, IHC

**Recommended dilutions:**

ELISA:1:2000-1:10000, IHC:1:20-1:200

**Protein Background:**

Non-catalytic subunit of the peripheral V1 complex of vacuolar ATPase. V-ATPase is responsible for acidifying a variety of intracellular compartments in eukaryotic cells.

**Gene ID:**

ATP6V1B1

**Uniprot**

P15313

**Synonyms:**

V-type proton ATPase subunit B, kidney isoform (V-ATPase subunit B 1) (Endomembrane proton pump 58 kDa subunit) (Vacuolar proton pump subunit B 1), ATP6V1B1, ATP6B1 VATB VPP3

**Immunogen:**

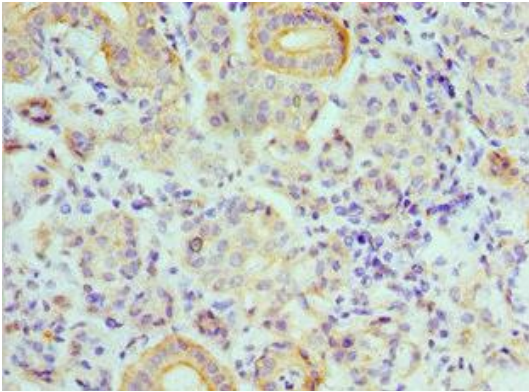
Recombinant Human V-type proton ATPase subunit B, kidney isoform protein (1-280AA).

**Storage:**

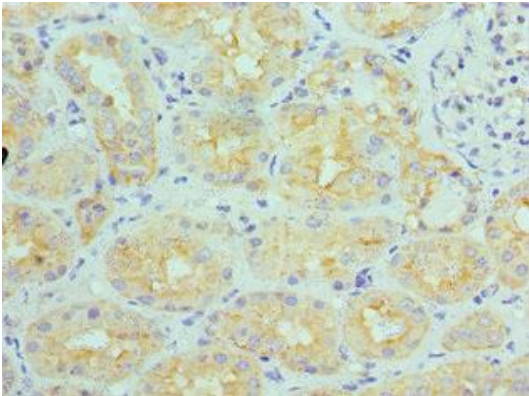
PBS with 0.02% sodium azide, 50% glycerol, pH7.3.

## Product Images

---



Immunohistochemistry of paraffin-embedded human salivary gland tissue using PACO43166 at dilution of 1:100.



Immunohistochemistry of paraffin-embedded human kidney tissue using PACO43166 at dilution of 1:100.