

Product Information

Size:

50ul

Reactivity:

Human

Source:

Rabbit

Isotype:

IgG

Applications:

ELISA, IHC

Recommended dilutions:

ELISA:1:2000-1:10000, IHC:1:20-1:200

Protein Background:

Testis-specific DNA binding protein responsible for insulator function, nuclear architecture and transcriptional control, which probably acts by recruiting epigenetic chromatin modifiers. Plays a key role in gene imprinting in male germline, by participating in the establishment of differential methylation at the IGF2/H19 imprinted control region (ICR). Directly binds the unmethylated H19 ICR and recruits the PRMT7 methyltransferase, leading to methylate histone H4 'Arg-3' to form H4R3sme2. This probably leads to recruit de novo DNA methyltransferases at these sites. Seems to act as tumor suppressor. In association with DNMT1 and DNMT3B, involved in activation of BAG1 gene expression by binding to its promoter. Required for dimethylation of H3 lysine 4 (H3K4me2) of MYC and BRCA1 promoters.

Gene ID:

CTCFL

Uniprot

Q8NI51

Synonyms:

Transcriptional repressor CTCFL (Brother of the regulator of imprinted sites) (CCCTC-binding factor) (CTCF paralog) (CTCF-like protein) (Cancer/testis antigen 27) (CT27) (Zinc finger protein CTCF-T), CTCFL, BORIS

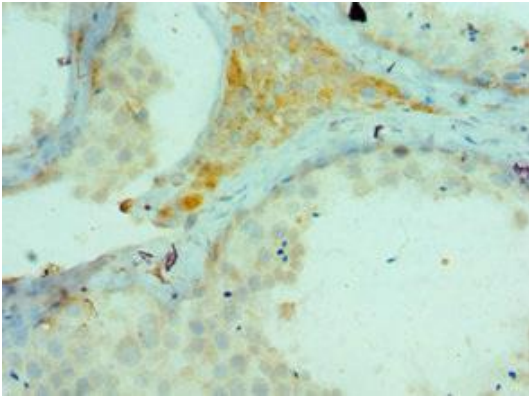
Immunogen:

Recombinant Human Transcriptional repressor CTCFL protein (1-270AA).

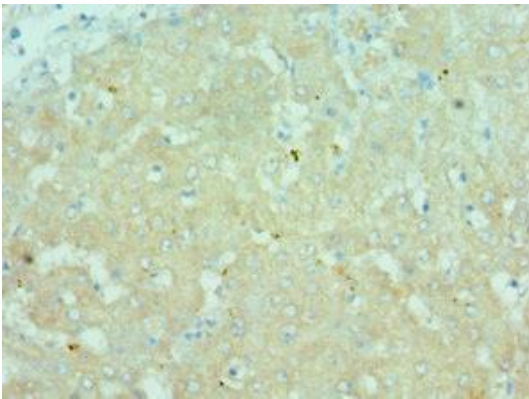
Storage:

PBS with 0.02% sodium azide, 50% glycerol, pH7.3.

Product Images



Immunohistochemistry of paraffin-embedded human testis tissue using PACO43180 at dilution of 1:100.



Immunohistochemistry of paraffin-embedded human liver tissue using PACO43180 at dilution of 1:100.