

# CETN2 Antibody



PACO43188

---

## Product Information

**Size:**

50ul

**Reactivity:**

Human

**Source:**

Rabbit

**Isotype:**

IgG

**Applications:**

ELISA, IHC

**Recommended dilutions:**

ELISA:1:2000-1:10000, IHC:1:20-1:200

**Protein Background:**

**Gene ID:**

CETN2

**Uniprot**

P41208

**Synonyms:**

Centrin-2 (Caltractin isoform 1), CETN2, CALT CEN2

**Immunogen:**

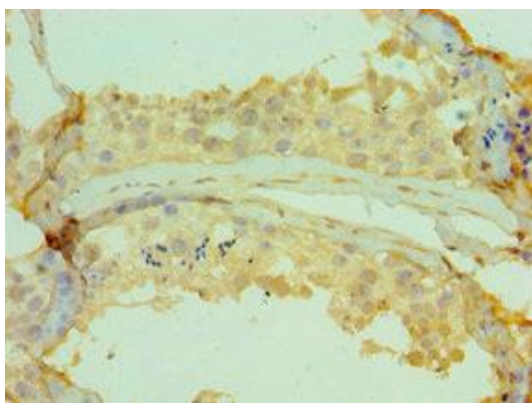
Recombinant Human Centrin-2 protein (1-172AA).

**Storage:**

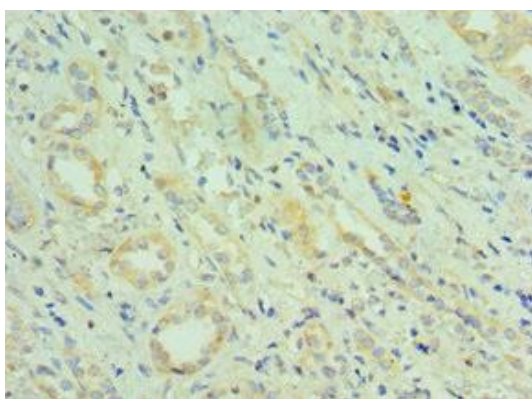
PBS with 0.02% sodium azide, 50% glycerol, pH7.3.

## Product Images

---



Immunohistochemistry of paraffin-embedded human testis tissue using PACO43188 at dilution of 1:100.



Immunohistochemistry of paraffin-embedded human kidney tissue using PACO43188 at dilution of 1:100.