

# COL10A1 Antibody



PACO43208

---

## Product Information

**Size:**

50ul

**Reactivity:**

Human

**Source:**

Rabbit

**Isotype:**

IgG

**Applications:**

ELISA, WB, IHC

**Recommended dilutions:**

ELISA:1:2000-1:10000, WB:1:500-1:2000,  
IHC:1:20-1:200

**Protein Background:**

Type X collagen is a product of hypertrophic chondrocytes and has been localized to presumptive mineralization zones of hyaline cartilage.

**Gene ID:**

COL10A1

**Uniprot**

Q03692

**Synonyms:**

Collagen alpha-1(X) chain, COL10A1

**Immunogen:**

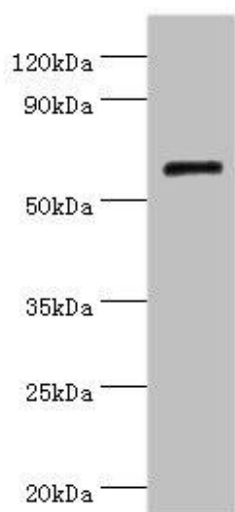
Recombinant Human Collagen alpha-1(X) chain protein (521-680AA).

**Storage:**

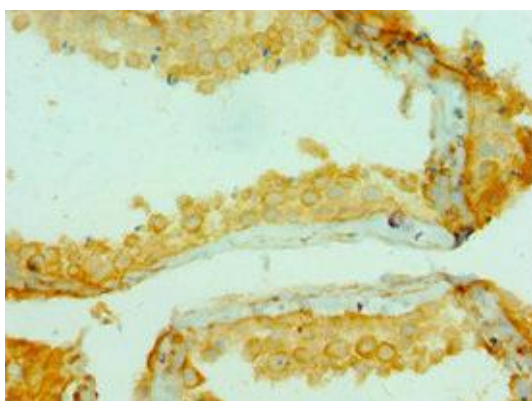
PBS with 0.02% sodium azide, 50% glycerol, pH7.3.

## Product Images

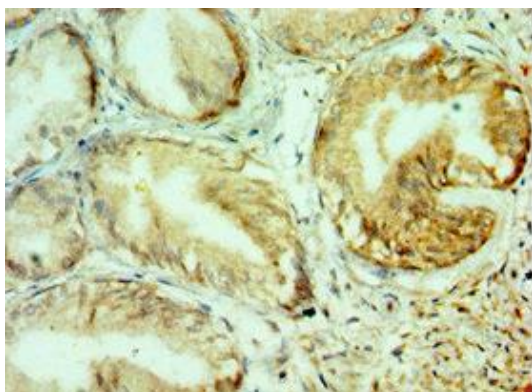
---



Western blot. All lanes: COL10A1 antibody at 4 $\mu$ g/ml + K562 whole cell lysate. Secondary. Goat polyclonal to rabbit IgG at 1/10000 dilution. Predicted band size: 66 kDa. Observed band size: 66 kDa.



Immunohistochemistry of paraffin-embedded human testis tissue using PACO43208 at dilution of 1:100.



Immunohistochemistry of paraffin-embedded human prostate tissue using PACO43208 at dilution of 1:100.