

Product Information

Size:

50ul

Reactivity:

Human

Source:

Rabbit

Isotype:

IgG

Applications:

ELISA, IHC

Recommended dilutions:

ELISA:1:2000-1:10000, IHC:1:20-1:200

Protein Background:

Cadherins are calcium-dependent cell adhesion proteins. They preferentially interact with themselves in a homophilic manner in connecting cells; cadherins may thus contribute to the sorting of heterogeneous cell types. May act as a negative regulator of neural cell growth.

Gene ID:

CDH13

Uniprot

P55290

Synonyms:

Cadherin-13 (Heart cadherin) (H-cadherin) (P105) (Truncated cadherin) (T-cad) (T-cadherin), CDH13, CDHH

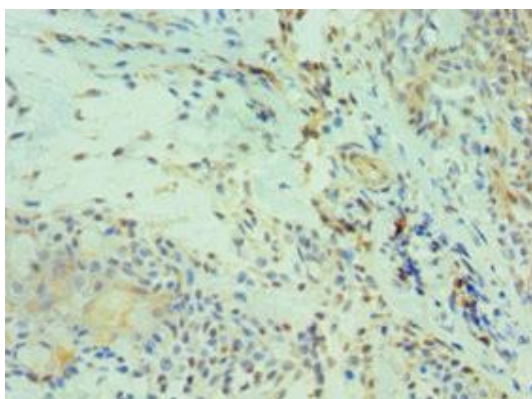
Immunogen:

Recombinant Human Cadherin-13 protein (120-370AA).

Storage:

PBS with 0.02% sodium azide, 50% glycerol, pH7.3.

Product Images



Immunohistochemistry of paraffin-embedded human breast cancer using PACO43218 at dilution of 1:100.