

HSD11B1 Antibody



PACO43222

Product Information

Size:

50ul

Reactivity:

Human, Mouse

Source:

Rabbit

Isotype:

IgG

Applications:

ELISA, WB, IHC

Recommended dilutions:

ELISA:1:2000-1:10000, WB:1:500-1:2000,
IHC:1:20-1:200

Protein Background:

Catalyzes reversibly the conversion of cortisol to the inactive metabolite cortisone.
Catalyzes reversibly the conversion of 7-ketocholesterol to 7-beta-hydroxycholesterol.
In intact cells, the reaction runs only in one direction, from 7-ketocholesterol to 7-beta-hydroxycholesterol.

Gene ID:

HSD11B1

Uniprot

P28845

Synonyms:

Corticosteroid 11-beta-dehydrogenase isozyme 1 (EC 1.1.1.146) (11-beta-hydroxysteroid dehydrogenase 1) (11-DH) (11-beta-HSD1) (Short chain dehydrogenase/reductase family 26C member 1), HSD11B1, HSD11 HSD11L SDR26C1

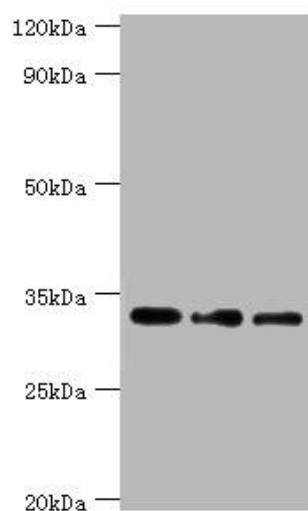
Immunogen:

Recombinant Human Corticosteroid 11-beta-dehydrogenase isozyme 1 protein (25-292AA).

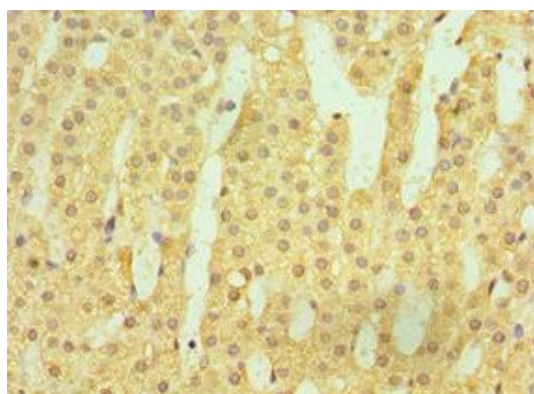
Storage:

PBS with 0.02% sodium azide, 50% glycerol, pH7.3.

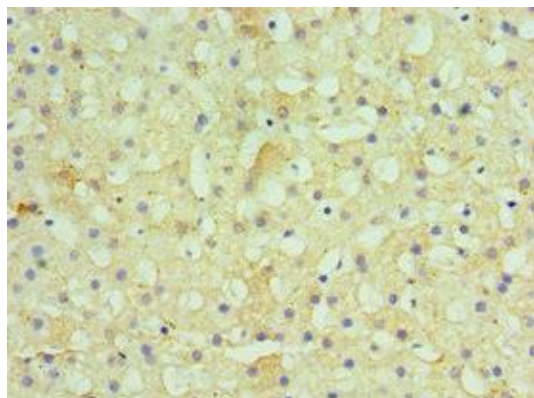
Product Images



Western blot. All lanes: Corticosteroid 11-beta-dehydrogenase isozyme 1 antibody at 7 μ g/ml. Lane 1: Mouse liver tissue. Lane 2: Jurkat whole cell lysate. Lane 3: LO2 whole cell lysate. Secondary. Goat polyclonal to rabbit IgG at 1/10000 dilution. Predicted band size: 32 kDa. Observed band size: 32 kDa.



Immunohistochemistry of paraffin-embedded human adrenal gland tissue using PACO43222 at dilution of 1:100.



Immunohistochemistry of paraffin-embedded human liver tissue using PACO43222 at dilution of 1:100.