

FDFT1 Antibody



PACO43235

Product Information

Size:

50ul

Reactivity:

Human, Mouse

Source:

Rabbit

Isotype:

IgG

Applications:

ELISA, WB, IHC, IF

Recommended dilutions:

ELISA:1:2000-1:10000, WB:1:1000-1:5000,
IHC:1:20-1:200, IF:1:50-1:200

Protein Background:**Gene ID:**

FDFT1

Uniprot

P37268

Synonyms:

Squalene synthase (SQS) (SS) (EC 2.5.1.21) (FPP: FPP farnesyltransferase) (Farnesyl-diphosphate farnesyltransferase), FDFT1

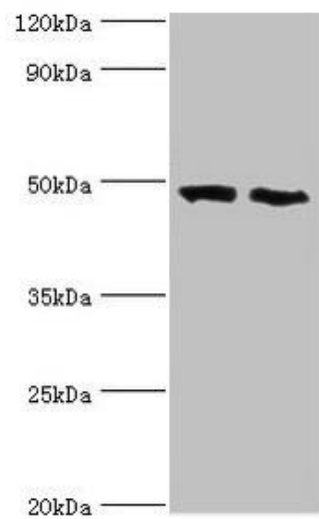
Immunogen:

Recombinant Human Squalene synthase protein (1-260AA).

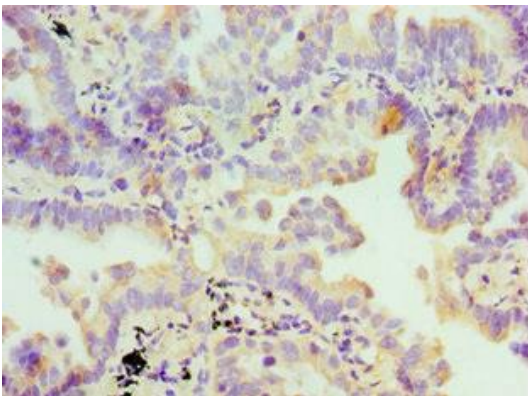
Storage:

PBS with 0.02% sodium azide, 50% glycerol, pH7.3.

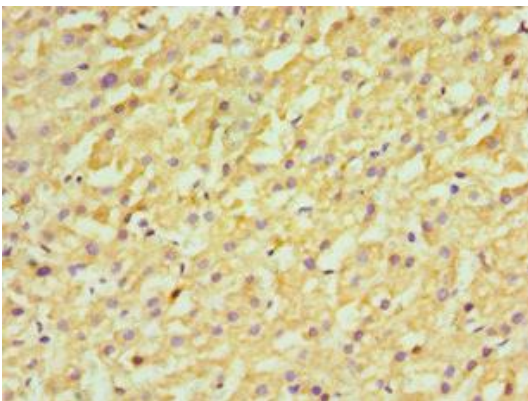
Product Images



Western blot. All lanes: FDFT1 antibody at 2 μ g/ml. Lane 1: 293T whole cell lysate. Lane 2: Mouse liver tissue. Secondary. Goat polyclonal to rabbit IgG at 1/10000 dilution. Predicted band size: 49, 41, 39, 36, 44 kDa. Observed band size: 49 kDa.



Immunohistochemistry of paraffin-embedded human lung cancer using PACO43235 at dilution of 1:100.



Immunohistochemistry of paraffin-embedded human liver cancer using PACO43235 at dilution of 1:100.