

Product Information

Size:

50ul

Reactivity:

Human, Mouse, Rat

Source:

Rabbit

Isotype:

IgG

Applications:

ELISA, WB, IHC

Recommended dilutions:

ELISA:1:2000-1:10000, WB:1:200-1:1000,
IHC:1:20-1:200

Protein Background:

Plays a role in protein sorting and trafficking between the trans-Golgi network (TGN) and endosomes. Mediates the ARF-dependent recruitment of clathrin to the TGN and binds ubiquitinated proteins and membrane cargo molecules with a cytosolic acid, c cluster-dileucine (AC-LL) motif.

Gene ID:

GGA2

Uniprot

Q9UJY4

Synonyms:

ADP-ribosylation factor-binding protein GGA2 (Gamma-adaptin-related protein 2) (Golgi-localized, gamma ear-containing, ARF-binding protein 2) (VHS domain and ear domain of gamma-adaptin) (Vear), GGA2, KIAA1080

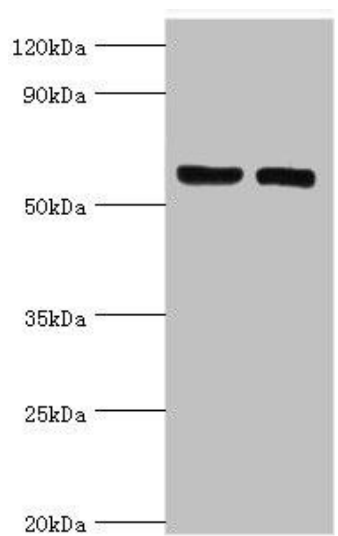
Immunogen:

Recombinant Human ADP-ribosylation factor-binding protein GGA2 protein (1-300AA).

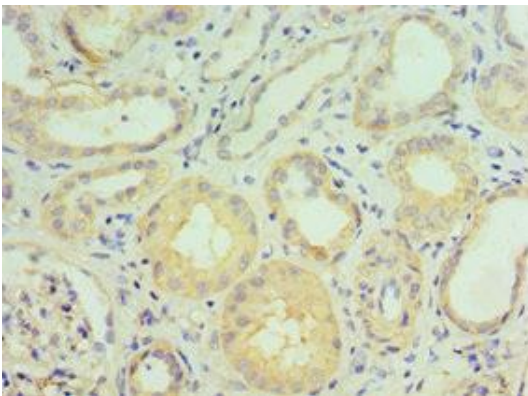
Storage:

PBS with 0.02% sodium azide, 50% glycerol, pH7.3.

Product Images



Western blot. All lanes: ADP-ribosylation factor-binding protein GGA2 antibody at 10 μ g/ml. Lane 1: Rat brain tissue. Lane 2: Mouse liver tissue. Secondary. Goat polyclonal to rabbit IgG at 1/10000 dilution. Predicted band size: 67 kDa. Observed band size: 67 kDa.



Immunohistochemistry of paraffin-embedded human kidney tissue using PACO43239 at dilution of 1:100.