

PACO43242

Product Information

Size:

50ul

Reactivity:

Human

Source:

Rabbit

Isotype:

IgG

Applications:

ELISA, IHC

Recommended dilutions:

ELISA:1:2000-1:10000, IHC:1:20-1:200

Protein Background:

Required for the high affinity binding of interleukin 18 (IL-18) to its receptor complex. Together with IL18R1 mediates IL-18-dependent activation of NF-kappa-B and JNK.

Gene ID:

IL18RAP

Uniprot

O95256

Synonyms:

Interleukin-18 receptor accessory protein (IL-18 receptor accessory protein) (IL-18RAcP) (Accessory protein-like) (AcPL) (CD218 antigen-like family member B) (CDw218b) (IL-1R accessory protein-like) (IL-1RAcPL) (Interleukin-1 receptor 7) (IL-1R-7) (IL-1R7) (Interleukin-18 receptor accessory protein-like) (Interleukin-18 receptor beta) (IL-18R-beta) (IL-18Rbeta) (CD antigen CD218b), IL18RAP, IL1R7

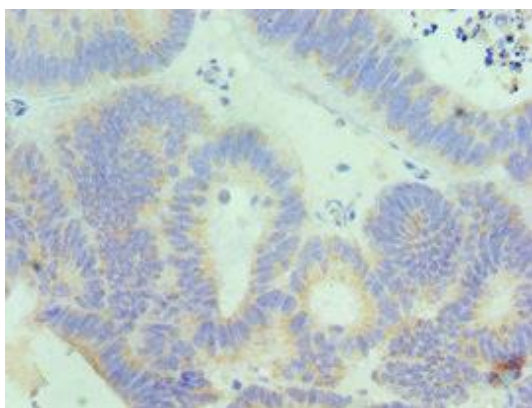
Immunogen:

Recombinant Human Interleukin-18 receptor accessory protein (390-599AA).

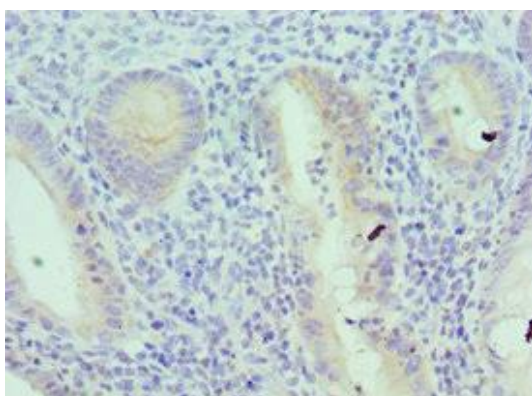
Storage:

PBS with 0.02% sodium azide, 50% glycerol, pH7.3.

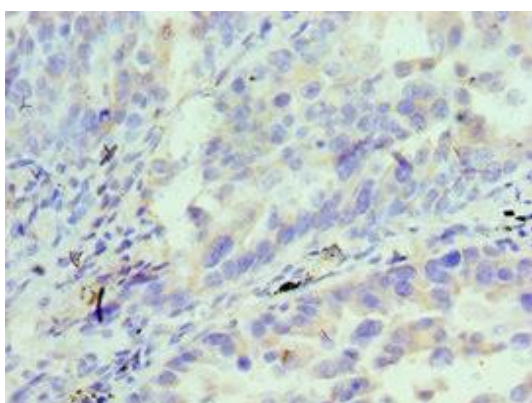
Product Images



Immunohistochemistry of paraffin-embedded human colon cancer using PACO43242 at dilution of 1:100.



Immunohistochemistry of paraffin-embedded human epityphlon tissue using PACO43242 at dilution of 1:100.



Immunohistochemistry of paraffin-embedded human lung cancer using PACO43242 at dilution of 1:100.