

PACO43255

Product Information

Size:

50ul

Reactivity:

Human

Source:

Rabbit

Isotype:

IgG

Applications:

ELISA, IHC

Recommended dilutions:

ELISA:1:2000-1:10000, IHC:1:20-1:200

Protein Background:

Cell surface proteoglycan that bears both heparan sulfate and chondroitin sulfate and that links the cytoskeleton to the interstitial matrix.

Gene ID:

SDC1

Uniprot

P18827

Synonyms:

Syndecan-1 (SYND1) (CD antigen CD138), SDC1, SDC

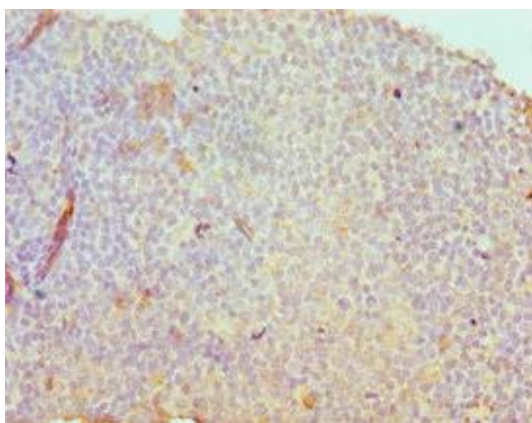
Immunogen:

Recombinant Human Syndecan-1 protein (25-240AA).

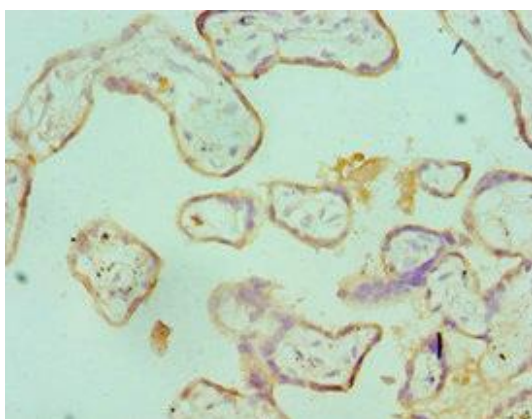
Storage:

PBS with 0.02% sodium azide, 50% glycerol, pH7.3.

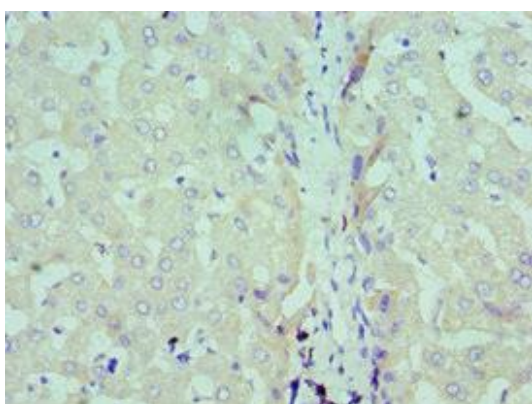
Product Images



Immunohistochemistry of paraffin-embedded human tonsil tissue using PACO43255 at dilution of 1:100.



Immunohistochemistry of paraffin-embedded human placenta tissue using PACO43255 at dilution of 1:100.



Immunohistochemistry of paraffin-embedded human liver tissue using PACO43255 at dilution of 1:100.