

# SERPINA6 Antibody



PACO43257

---

## Product Information

**Size:**

50ul

**Reactivity:**

Human

**Source:**

Rabbit

**Isotype:**

IgG

**Applications:**

ELISA, IHC, IF

**Recommended dilutions:**

ELISA:1:2000-1:10000, IHC:1:20-1:200,  
IF:1:50-1:200

**Protein Background:**

Major transport protein for glucocorticoids and progestins in the blood of almost all vertebrate species.

**Gene ID:**

SERPINA6

**Uniprot**

P08185

**Synonyms:**

Corticosteroid-binding globulin (CBG) (Serp A6) (Transcortin), SERPINA6, CBG

**Immunogen:**

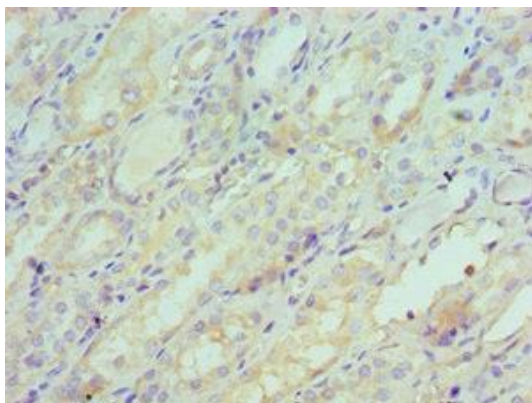
Recombinant Human Corticosteroid-binding globulin protein (136-405AA).

**Storage:**

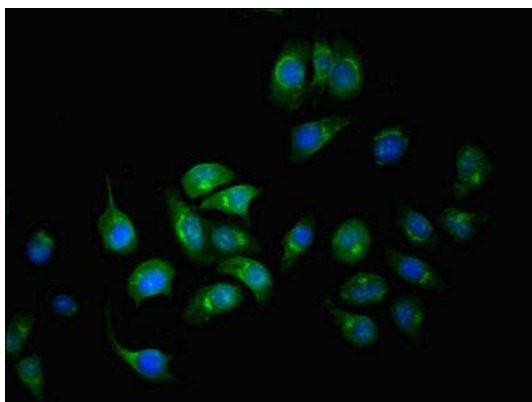
PBS with 0.02% sodium azide, 50% glycerol, pH7.3.

## Product Images

---



Immunohistochemistry of paraffin-embedded human kidney tissue using PACO43257 at dilution of 1:100.



Immunofluorescent analysis of A549 cells using PACO43257 at dilution of 1:100 and Alexa Fluor 488-conjugated AffiniPure Goat Anti-Rabbit IgG(H+L).