

MDH2 Antibody



PACO43260

Product Information

Size:

50ul

Reactivity:

Human, Mouse

Source:

Rabbit

Isotype:

IgG

Applications:

ELISA, WB

Recommended dilutions:

ELISA:1:2000-1:10000, WB:1:500-1:5000

Protein Background:

Gene ID:

MDH2

Uniprot

P40926

Synonyms:

Malate dehydrogenase, mitochondrial (EC 1.1.1.37), MDH2

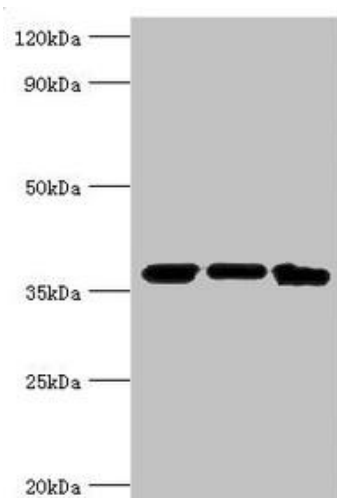
Immunogen:

Recombinant Human Malate dehydrogenase, mitochondrial protein (59-338AA).

Storage:

PBS with 0.02% sodium azide, 50% glycerol, pH7.3.

Product Images



Western blot. All lanes: MDH2 antibody at 4 μ g/ml. Lane 1: Mouse lung tissue. Lane 2: 293T whole cell lysate. Lane 3: K562 whole cell lysate. Secondary. Goat polyclonal to rabbit IgG at 1/10000 dilution. Predicted band size: 36, 31 kDa. Observed band size: 36 kDa.