

# MDH2 Antibody



PACO43261

---

## Product Information

**Size:**

50ul

**Reactivity:**

Human

**Source:**

Rabbit

**Isotype:**

IgG

**Applications:**

ELISA, WB, IHC

**Recommended dilutions:**

ELISA:1:2000-1:10000, WB:1:500-1:2000,  
IHC:1:20-1:200

**Protein Background:**

**Gene ID:**

MDH2

**Uniprot**

P40926

**Synonyms:**

Malate dehydrogenase, mitochondrial (EC 1.1.1.37), MDH2

**Immunogen:**

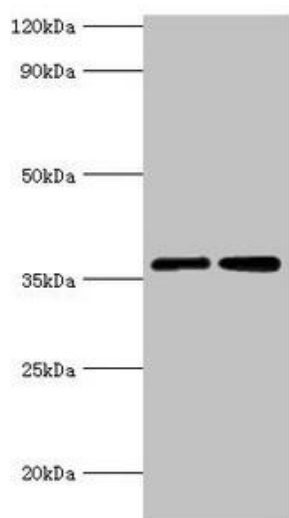
Recombinant Human Malate dehydrogenase, mitochondrial protein (59-338AA).

**Storage:**

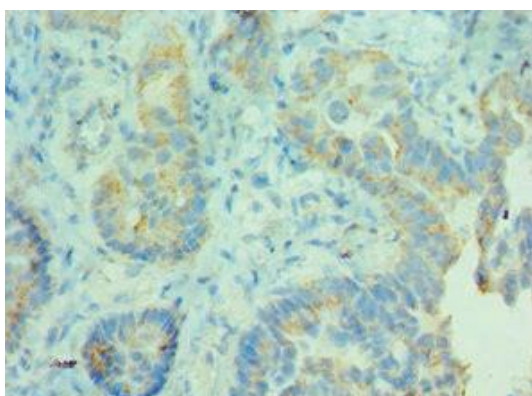
PBS with 0.02% sodium azide, 50% glycerol, pH7.3.

## Product Images

---



Western blot. All lanes: MDH2 antibody at 3 $\mu$ g/ml. Lane 1: 293T whole cell lysate. Lane 2: K562 whole cell lysate. Secondary. Goat polyclonal to rabbit IgG at 1/10000 dilution. Predicted band size: 36, 31 kDa. Observed band size: 36 kDa.



Immunohistochemistry of paraffin-embedded human lung cancer using PACO43261 at dilution of 1:100.