

MTM1 Antibody



PACO43264

Product Information

Size:

50ul

Reactivity:

Human

Source:

Rabbit

Isotype:

IgG

Applications:

ELISA, WB, IHC

Recommended dilutions:

ELISA:1:2000-1:10000, WB:1:200-1:1000,
IHC:1:20-1:200

Protein Background:

Lipid phosphatase which dephosphorylates phosphatidylinositol 3-monophosphate (PI3P) and phosphatidylinositol 3,5-bisphosphate (PI(3,5)P2). Has also been shown to dephosphorylate phosphotyrosine- and phosphoserine-containing peptides.

Negatively regulates EGFR degradation through regulation of EGFR trafficking from the late endosome to the lysosome. Plays a role in vacuolar formation and morphology.

Regulates desmin intermediate filament assembly and architecture. Plays a role in mitochondrial morphology and positioning. Required for skeletal muscle maintenance but not for myogenesis.

Gene ID:

MTM1

Uniprot

Q13496

Synonyms:

Myotubularin (Phosphatidylinositol-3,5-bisphosphate 3-phosphatase) (EC 3.1.3.95)
(Phosphatidylinositol-3-phosphate phosphatase) (EC 3.1.3.64), MTM1, CG2

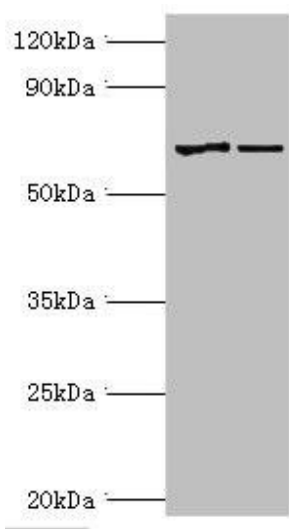
Immunogen:

Recombinant Human Myotubularin protein (484-603AA).

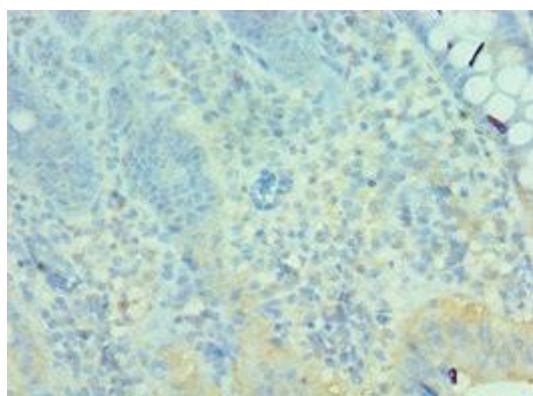
Storage:

PBS with 0.02% sodium azide, 50% glycerol, pH7.3.

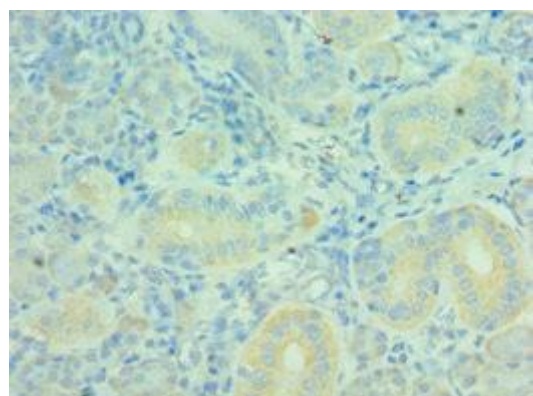
Product Images



Western blot. All lanes: Myotubularin antibody at 2 μ g/ml. Lane 1: Jurkat whole cell lysate. Lane 2: HepG2 whole cell lysate. Secondary: Goat polyclonal to rabbit IgG at 1/10000 dilution. Predicted band size: 70, 67 kDa. Observed band size: 70 kDa.



Immunohistochemistry of paraffin-embedded human epityphlon tissue using PACO43264 at dilution of 1:100.



Immunohistochemistry of paraffin-embedded human pancreatic tissue using PACO43264 at dilution of 1:100.