

PACO43295

Product Information

Size:

50ul

Reactivity:

Human

Source:

Rabbit

Isotype:

IgG

Applications:

ELISA, IHC

Recommended dilutions:

ELISA:1:2000-1:10000, IHC:1:20-1:200

Protein Background:**Gene ID:**

JMJD6

Uniprot

Q6NYC1

Synonyms:

Bifunctional arginine demethylase and lysyl-hydroxylase JMJD6 (EC 1.14.11. -) (Histone arginine demethylase JMJD6) (JmjC domain-containing protein 6) (Jumonji domain-containing protein 6) (Lysyl-hydroxylase JMJD6) (Peptide-lysine 5-dioxygenase JMJD6) (Phosphatidylserine receptor) (Protein PTDSR), JMJD6, KIAA0585 PTDSR

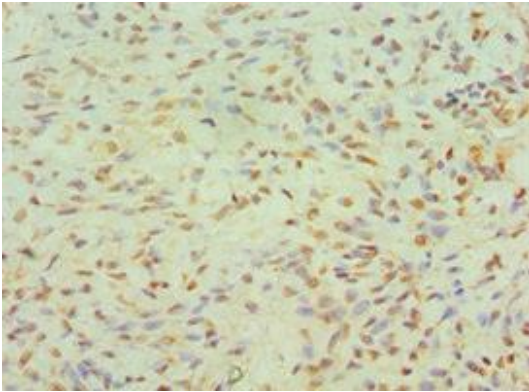
Immunogen:

Recombinant Human Bifunctional arginine demethylase and lysyl-hydroxylase JMJD6 protein (1-320AA).

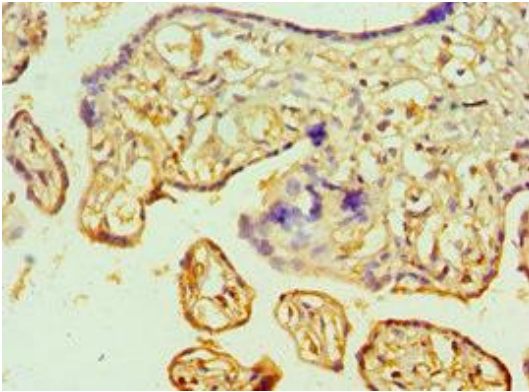
Storage:

PBS with 0.02% sodium azide, 50% glycerol, pH7.3.

Product Images



Immunohistochemistry of paraffin-embedded human breast cancer using PACO43295 at dilution of 1:100.



Immunohistochemistry of paraffin-embedded human placenta tissue using PACO43295 at dilution of 1:100.