

---

## Product Information

**Size:**

50ul

**Reactivity:**

Human

**Source:**

Rabbit

**Isotype:**

IgG

**Applications:**

ELISA, IHC, IP

**Recommended dilutions:**

ELISA:1:2000-1:10000, IHC:1:20-1:200,  
IP:1:200-1:2000

**Protein Background:**

The human placenta is a multihormonal endocrine organ that produces hormones, enzymes, and other molecules that support fetal survival and development. Pregnancy-specific beta-1-glycoprotein (PSBG, PSG) is a major product of the syncytiotrophoblast, reaching concentrations of 100 to 290 mg/l at term in the serum of pregnant women.

**Gene ID:**

PSG1

**Uniprot**

P11464

**Synonyms:**

Pregnancy-specific beta-1-glycoprotein 1 (PS-beta-G-1) (PSBG-1) (Pregnancy-specific glycoprotein 1) (CD66 antigen-like family member F) (Fetal liver non-specific cross-reactive antigen 1/2) (FL-NCA-1/2) (PSG95) (Pregnancy-specific beta-1 glycoprotein C/D) (PS-beta-C/D) (CD antigen CD66f), PSG1, B1G1 PSBG1 PSGGA

**Immunogen:**

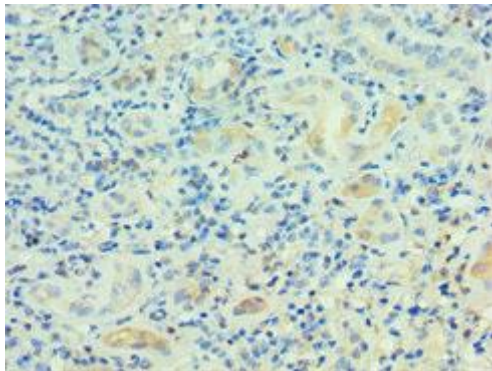
Recombinant Human Pregnancy-specific beta-1-glycoprotein 1 protein (180-419AA).

**Storage:**

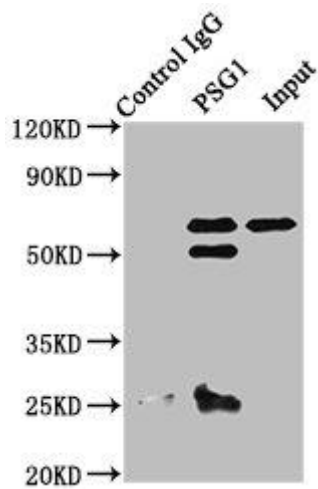
PBS with 0.02% sodium azide, 50% glycerol, pH7.3.

## Product Images

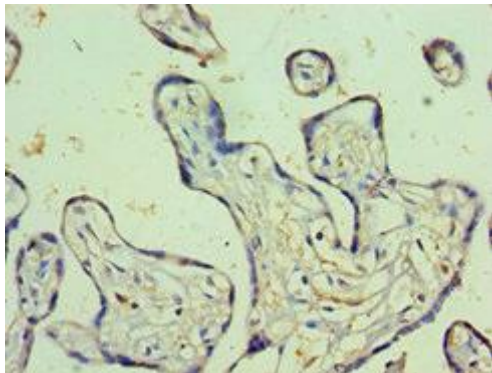
---



Immunohistochemistry of paraffin-embedded human kidney tissue using PACO43301 at dilution of 1:100.



Immunoprecipitating PSG1 in A549 whole cell lysate. Lane 1: Rabbit control IgG instead of PACO43301 in A549 whole cell lysate. For western blotting, a HRP-conjugated Protein G antibody was used as the secondary antibody (1/2000). Lane 2: PACO43301 (8 $\mu$ g) + A549 whole cell lysate (500 $\mu$ g). Lane 3: A549 whole cell lysate (10 $\mu$ g).



Immunohistochemistry of paraffin-embedded human placenta tissue using PACO43301 at dilution of 1:100.