

---

## Product Information

**Size:**

50ul

**Reactivity:**

Human

**Source:**

Rabbit

**Isotype:**

IgG

**Applications:**

ELISA, IHC

**Recommended dilutions:**

ELISA:1:2000-1:10000, IHC:1:20-1:200

**Protein Background:**

Component of the chromosomal passenger complex (CPC), a complex that acts as a key regulator of mitosis. The CPC complex has essential functions at the centromere in ensuring correct chromosome alignment and segregation and is required for chromatin-induced microtubule stabilization and spindle assembly. In the complex, it may be required to direct the CPC to centromeric DNA. Major effector of the TTK kinase in the control of attachment-error-correction and chromosome alignment.

**Gene ID:**

CDCA8

**Uniprot**

Q53HL2

**Synonyms:**

Borealin (Cell division cycle-associated protein 8) (Dasra-B) (hDasra-B) (Pluripotent embryonic stem cell-related gene 3 protein), CDCA8, PESCRG3

**Immunogen:**

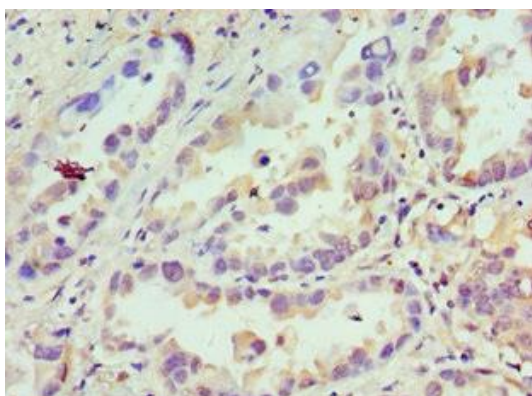
Recombinant Human Borealin protein (1-280AA).

**Storage:**

PBS with 0.02% sodium azide, 50% glycerol, pH7.3.

## Product Images

---



Immunohistochemistry of paraffin-embedded human lung cancer using PACO43310 at dilution of 1: 100.