
Product Information

Size:

50ul

Reactivity:

Human

Source:

Rabbit

Isotype:

IgG

Applications:

ELISA, IHC

Recommended dilutions:

ELISA:1:2000-1:10000, IHC:1:20-1:200

Protein Background:

C1q associates with the proenzymes C1r and C1s to yield C1, the first component of the serum complement system. The collagen-like regions of C1q interact with the Ca^{2+} -dependent C1r2C1s2 proenzyme complex, and efficient activation of C1 takes place on interaction of the globular heads of C1q with the Fc regions of IgG or IgM antibody present in immune complexes.

Gene ID:

C1QB

Uniprot

P02746

Synonyms:

Complement C1q subcomponent subunit B, C1QB

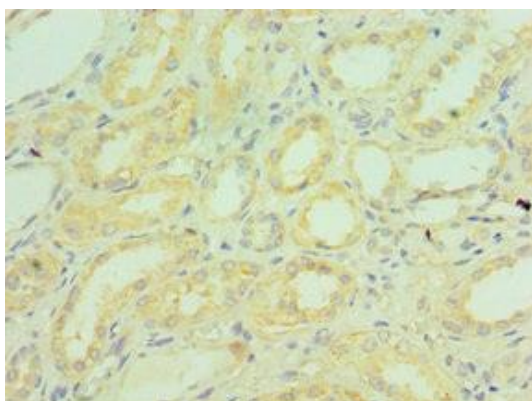
Immunogen:

Recombinant Human Complement C1q subcomponent subunit B protein (104-253AA).

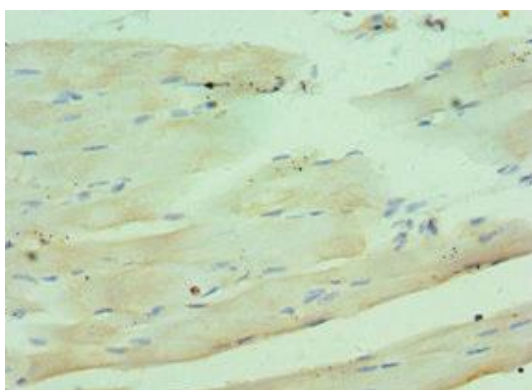
Storage:

PBS with 0.02% sodium azide, 50% glycerol, pH7.3.

Product Images



Immunohistochemistry of paraffin-embedded human kidney tissue using PACO43312 at dilution of 1:100.



Immunohistochemistry of paraffin-embedded human skeletal muscle tissue using PACO43312 at dilution of 1:100.