

RBX1 Antibody



PACO43318

Product Information

Size:

50ul

Reactivity:

Human

Source:

Rabbit

Isotype:

IgG

Applications:

ELISA, WB, IHC

Recommended dilutions:

ELISA:1:2000-1:10000, WB:1:500-1:2000,
IHC:1:20-1:200

Protein Background:**Gene ID:**

RBX1

Uniprot

P62877

Synonyms:

E3 ubiquitin-protein ligase RBX1 (EC 2.3.2. -) (E3 ubiquitin-protein transferase RBX1) (Protein ZYP) (RING finger protein 75) (RING-box protein 1) (Rbx1) (Regulator of cullins 1) [Cleaved into: E3 ubiquitin-protein ligase RBX1, N-terminally processed (E3 ubiquitin-protein transferase RBX1, N-terminally processed)], RBX1, RNF75 ROC1

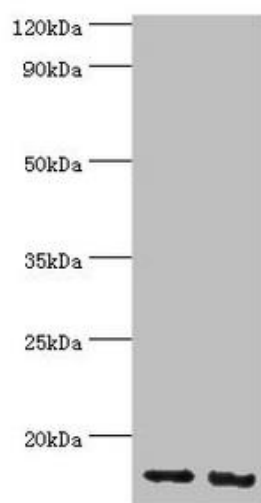
Immunogen:

Recombinant Human E3 ubiquitin-protein ligase RBX1 protein (1-108AA).

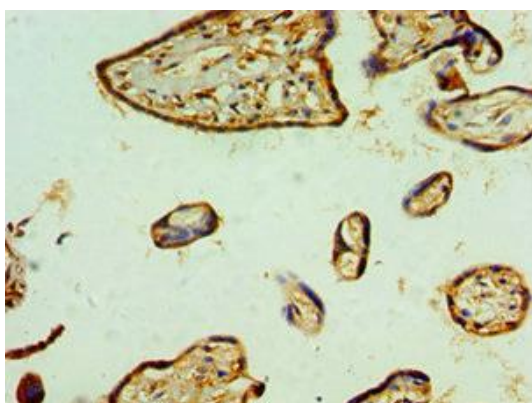
Storage:

PBS with 0.02% sodium azide, 50% glycerol, pH7.3.

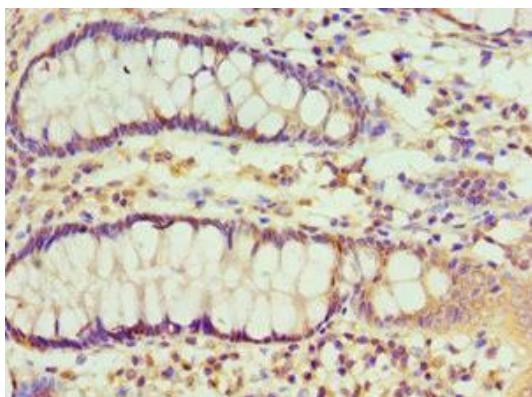
Product Images



Western blot. All lanes: E3 ubiquitin-protein ligase RBX1 antibody at 4 μ g/ml. Lane 1: HeLa whole cell lysate. Lane 2: HepG2 whole cell lysate. Secondary. Goat polyclonal to rabbit IgG at 1/10000 dilution. Predicted band size: 12 kDa. Observed band size: 12 kDa.



Immunohistochemistry of paraffin-embedded human placenta tissue using PACO43318 at dilution of 1:100.



Immunohistochemistry of paraffin-embedded human colon tissue using PACO43318 at dilution of 1:100.