

# RBX1 Antibody



PACO43319

---

## Product Information

**Size:**

50ul

**Reactivity:**

Human

**Source:**

Rabbit

**Isotype:**

IgG

**Applications:**

ELISA, IHC

**Recommended dilutions:**

ELISA:1:2000-1:10000, IHC:1:20-1:200

**Protein Background:****Gene ID:**

RBX1

**Uniprot**

P62877

**Synonyms:**

E3 ubiquitin-protein ligase RBX1 (EC 2.3.2. -) (E3 ubiquitin-protein transferase RBX1) (Protein ZYP) (RING finger protein 75) (RING-box protein 1) (Rbx1) (Regulator of cullins 1) [Cleaved into: E3 ubiquitin-protein ligase RBX1, N-terminally processed (E3 ubiquitin-protein transferase RBX1, N-terminally processed)], RBX1, RNF75 ROC1

**Immunogen:**

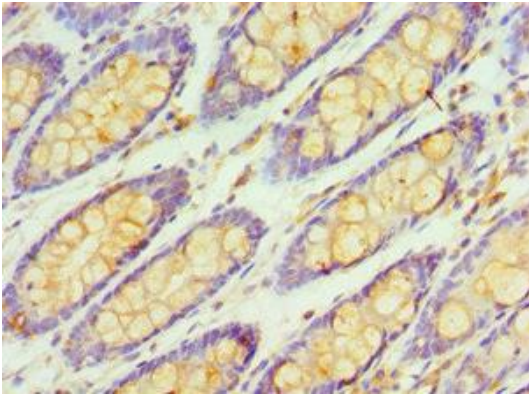
Recombinant Human E3 ubiquitin-protein ligase RBX1 protein (1-108AA).

**Storage:**

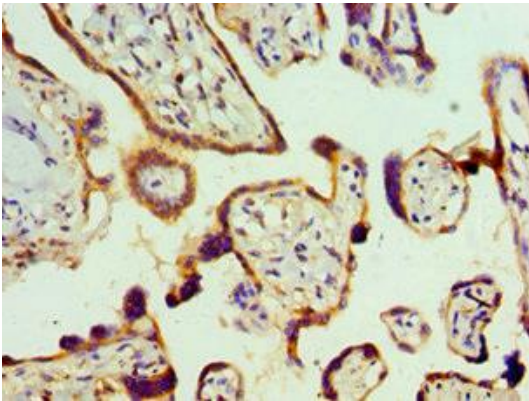
PBS with 0.02% sodium azide, 50% glycerol, pH7.3.

## Product Images

---



Immunohistochemistry of paraffin-embedded human colon tissue using PACO43319 at dilution of 1:100.



Immunohistochemistry of paraffin-embedded human placenta tissue using PACO43319 at dilution of 1:100.