

PACO43323

Product Information

Size:

50ul

Reactivity:

Human

Source:

Rabbit

Isotype:

IgG

Applications:

ELISA, IHC

Recommended dilutions:

ELISA:1:2000-1:10000, IHC:1:20-1:200

Protein Background:

Major secreted protease of mast cells with suspected roles in vasoactive peptide generation, extracellular matrix degradation, and regulation of gland secretion.

Gene ID:

CMA1

Uniprot

P23946

Synonyms:

Chymase (EC 3.4.21.39) (Alpha-chymase) (Mast cell protease I), CMA1, CYH CYM

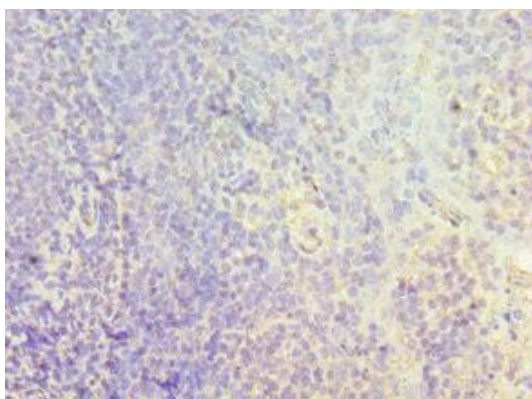
Immunogen:

Recombinant Human Chymase protein (1-247AA).

Storage:

PBS with 0.02% sodium azide, 50% glycerol, pH7.3.

Product Images



Immunohistochemistry of paraffin-embedded human tonsil tissue using PACO43323 at dilution of 1:100.