

PACO43325

Product Information

Size:

50ul

Reactivity:

Human

Source:

Rabbit

Isotype:

IgG

Applications:

ELISA, IHC

Recommended dilutions:

ELISA:1:2000-1:10000, IHC:1:20-1:200

Protein Background:

Tetranectin binds to plasminogen and to isolated kringle 4. May be involved in the packaging of molecules destined for exocytosis.

Gene ID:

CLEC3B

Uniprot

P05452

Synonyms:

Tetranectin (TN) (C-type lectin domain family 3 member B) (Plasminogen kringle 4-binding protein), CLEC3B, TNA

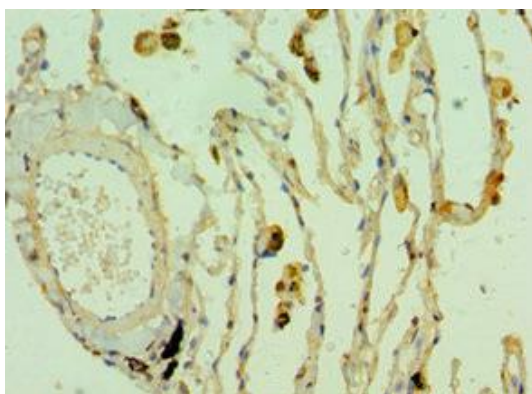
Immunogen:

Recombinant Human Tetranectin protein (22-202AA).

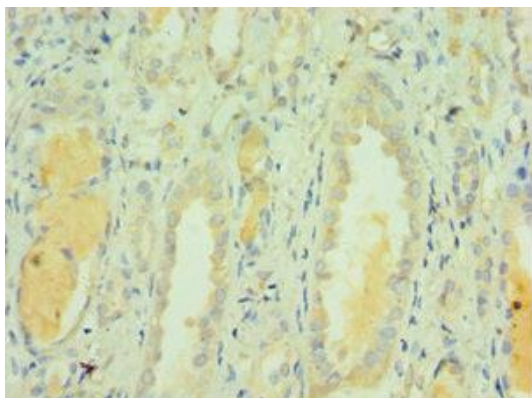
Storage:

PBS with 0.02% sodium azide, 50% glycerol, pH7.3.

Product Images



Immunohistochemistry of paraffin-embedded human lung cancer using PACO43325 at dilution of 1:100.



Immunohistochemistry of paraffin-embedded human kidney tissue using PACO43325 at dilution of 1:100.