

---

## Product Information

**Size:**

50ul

**Reactivity:**

Human, Mouse

**Source:**

Rabbit

**Isotype:**

IgG

**Applications:**

ELISA, WB, IHC

**Recommended dilutions:**

ELISA:1:2000-1:10000, WB:1:500-1:2000,  
IHC:1:20-1:200

**Protein Background:**

Receptor for IL1A, IL1B and IL1RN. After binding to interleukin-1 associates with the coreceptor IL1RAP to form the high affinity interleukin-1 receptor complex which mediates interleukin-1-dependent activation of NF-kappa-B, MAPK and other pathways. Signaling involves the recruitment of adapter molecules such as TOLLIP, MYD88, and IRAK1 or IRAK2 via the respective TIR domains of the receptor/coreceptor subunits. Binds ligands with comparable affinity and binding of antagonist IL1RN prevents association with IL1RAP to form a signaling complex.

**Gene ID:**

IL1R1

**Uniprot**

P14778

**Synonyms:**

Interleukin-1 receptor type 1 (IL-1R-1) (IL-1RT-1) (IL-1RT1) (CD121 antigen-like family member A) (Interleukin-1 receptor alpha) (IL-1R-alpha) (Interleukin-1 receptor type I) (p80) (CD antigen CD121a) [Cleaved into: Interleukin-1 receptor type 1, membrane form (mIL-1R1) (mIL-1RI); Interleukin-1 receptor type 1, soluble form (sIL-1R1) (sIL-1RI)], IL1R1, IL1R IL1RA IL1RT1

**Immunogen:**

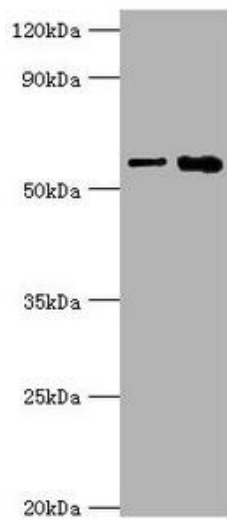
Recombinant Human Interleukin-1 receptor type 1 protein (18-320AA).

**Storage:**

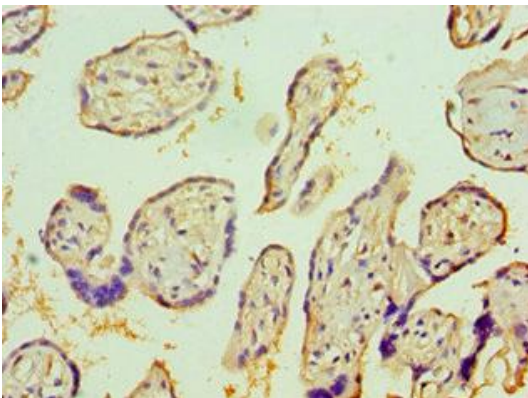
PBS with 0.02% sodium azide, 50% glycerol, pH7.3.

## Product Images

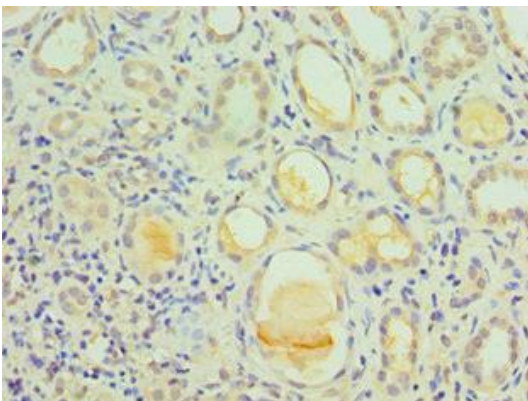
---



Western blot. All lanes: IL1R1 antibody at 6 $\mu$ g/ml. Lane 1: Hela whole cell lysate. Lane 2: Mouse heart tissue. Secondary: Goat polyclonal to rabbit IgG at 1/10000 dilution. Predicted band size: 65 kDa. Observed band size: 65 kDa.



Immunohistochemistry of paraffin-embedded human placenta tissue using PACO43329 at dilution of 1:100.



Immunohistochemistry of paraffin-embedded human kidney tissue using PACO43329 at dilution of 1:100.