

SRSF4 Antibody



PACO43346

Product Information

Size:

50ul

Reactivity:

Human

Source:

Rabbit

Isotype:

IgG

Applications:

ELISA, WB, IHC

Recommended dilutions:

ELISA:1:2000-1:10000, WB:1:200-1:1000,
IHC:1:20-1:200

Protein Background:

Plays a role in alternative splice site selection during pre-mRNA splicing. Represses the splicing of MAPT/Tau exon 10.

Gene ID:

SRSF4

Uniprot

Q08170

Synonyms:

Serine/arginine-rich splicing factor 4 (Pre-mRNA-splicing factor SRP75) (SRP001LB)
(Splicing factor, arginine/serine-rich 4), SRSF4, SFRS4 SRP75

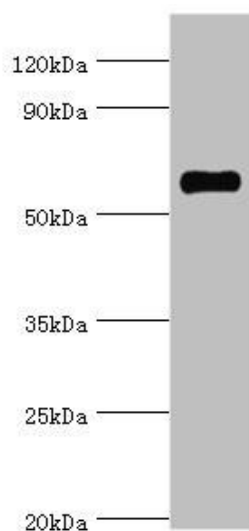
Immunogen:

Recombinant Human Serine/arginine-rich splicing factor 4 protein (1-180AA).

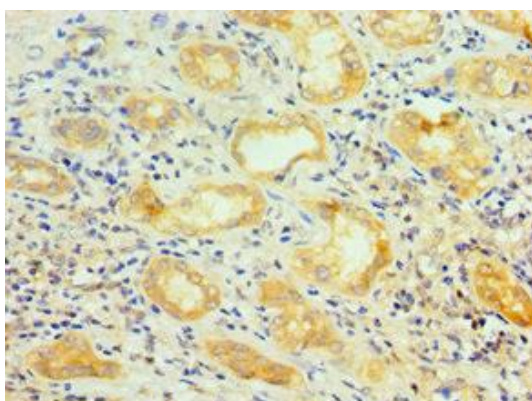
Storage:

PBS with 0.02% sodium azide, 50% glycerol, pH7.3.

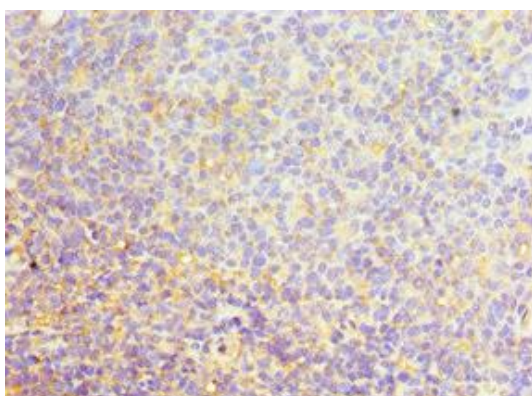
Product Images



Western blot. All lanes: SRSF4 antibody at 4 μ g/ml + HeLa whole cell lysate. Secondary. Goat polyclonal to rabbit IgG at 1/10000 dilution. Predicted band size: 57 kDa. Observed band size: 57 kDa.



Immunohistochemistry of paraffin-embedded human kidney tissue using PACO43346 at dilution of 1:100.



Immunohistochemistry of paraffin-embedded human tonsil tissue using PACO43346 at dilution of 1:100.