

SERPINA10 Antibody



PACO43367

Product Information

Size:

50ul

Reactivity:

Human, Mouse

Source:

Rabbit

Isotype:

IgG

Applications:

ELISA, WB, IHC

Recommended dilutions:

ELISA:1:2000-1:10000, WB:1:500-1:2000,
IHC:1:20-1:200

Protein Background:

Inhibits activity of the coagulation protease factor Xa in the presence of PROZ, calcium and phospholipids. Also inhibits factor XIa in the absence of cofactors.

Gene ID:

SERPINA10

Uniprot

Q9UK55

Synonyms:

Protein Z-dependent protease inhibitor (PZ-dependent protease inhibitor) (PZI) (Serpin A10), SERPINA10, ZPI

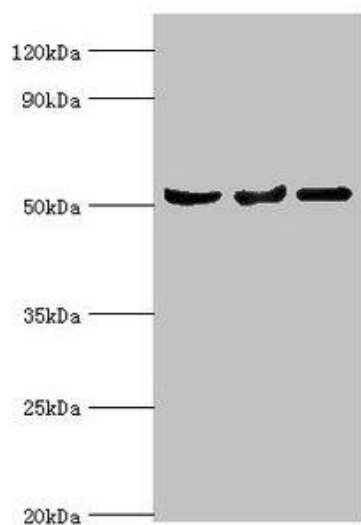
Immunogen:

Recombinant Human Protein Z-dependent protease inhibitor protein (165-444AA).

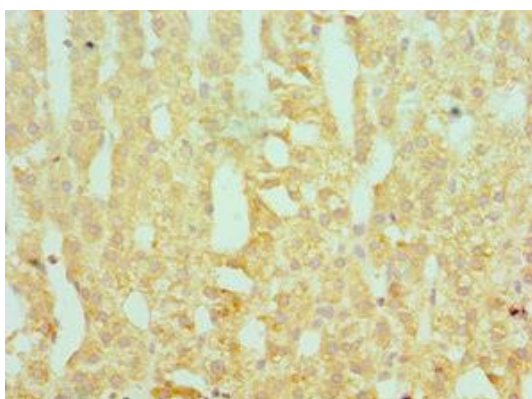
Storage:

PBS with 0.02% sodium azide, 50% glycerol, pH7.3.

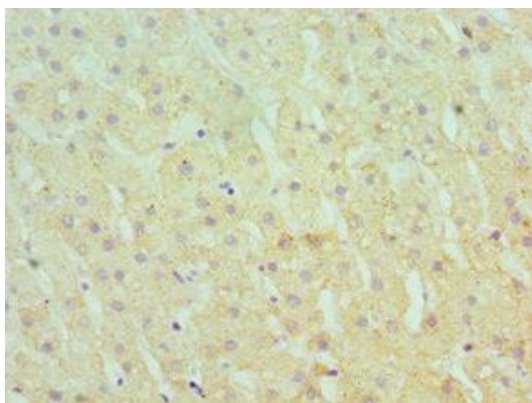
Product Images



Western blot. All lanes: Protein Z-dependent protease inhibitor antibody at 3 μ g/ml. Lane 1: Mouse liver tissue. Lane 2: HepG2 whole cell lysate. Lane 3: LO2 whole cell lysate. Secondary. Goat polyclonal to rabbit IgG at 1/10000 dilution. Predicted band size: 51 kDa. Observed band size: 51 kDa.



Immunohistochemistry of paraffin-embedded human adrenal gland tissue using PACO43367 at dilution of 1:100.



Immunohistochemistry of paraffin-embedded human liver tissue using PACO43367 at dilution of 1:100.