

Product Information

Size:

50ul

Reactivity:

Human

Source:

Rabbit

Isotype:

IgG

Applications:

ELISA, WB, IHC

Recommended dilutions:

ELISA:1:2000-1:10000, WB:1:500-1:2000,
IHC:1:20-1:200

Protein Background:

NAD-dependent protein deacetylase. Activates or deactivates mitochondrial target proteins by deacetylating key lysine residues. Known targets include ACSS1, IDH, GDH, SOD2, PDHA1, LCAD, SDHA and the ATP synthase subunit ATP5O. Contributes to the regulation of the cellular energy metabolism. Important for regulating tissue-specific ATP levels.

Gene ID:

SIRT3

Uniprot

Q9NTG7

Synonyms:

NAD-dependent protein deacetylase sirtuin-3, mitochondrial (hSIRT3) (EC 3.5.1. -)
(Regulatory protein SIR2 homolog 3) (SIR2-like protein 3), SIRT3, SIR2L3

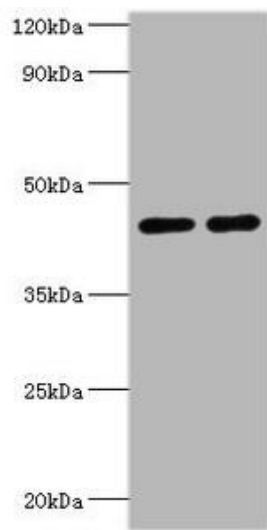
Immunogen:

Recombinant Human NAD-dependent protein deacetylase sirtuin-3, mitochondrial protein (20-130AA).

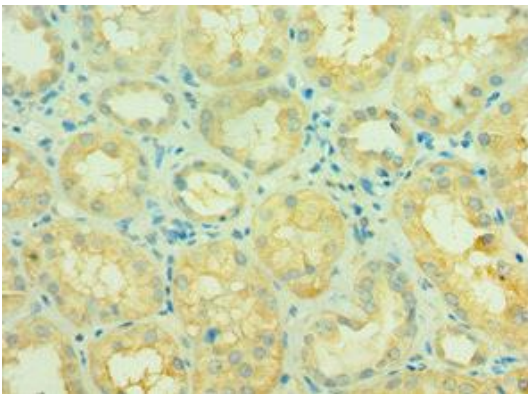
Storage:

PBS with 0.02% sodium azide, 50% glycerol, pH7.3.

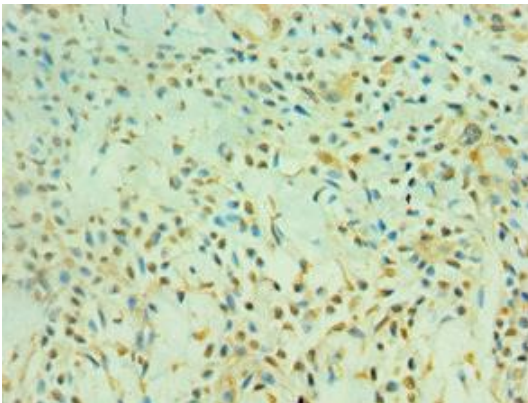
Product Images



Western blot. All lanes: NAD-dependent protein deacetylase sirtuin-3, mitochondrial antibody at 2 μ g/ml. Lane 1: NIH/3T3 whole cell lysate. Lane 2: HepG2 whole cell lysate. Secondary: Goat polyclonal to rabbit IgG at 1/10000 dilution. Predicted band size: 44, 29 kDa. Observed band size: 44 kDa.



Immunohistochemistry of paraffin-embedded human kidney tissue using PACO43375 at dilution of 1:100.



Immunohistochemistry of paraffin-embedded human breast cancer using PACO43375 at dilution of 1:100.