

## Product Information

**Size:**

50ul

**Reactivity:**

Human

**Source:**

Rabbit

**Isotype:**

IgG

**Applications:**

ELISA, WB, IHC

**Recommended dilutions:**

ELISA:1:2000-1:10000, WB:1:200-1:1000,  
IHC:1:20-1:200

**Protein Background:**

NAD-dependent protein deacetylase. Activates or deactivates mitochondrial target proteins by deacetylating key lysine residues. Known targets include ACSS1, IDH, GDH, SOD2, PDHA1, LCAD, SDHA and the ATP synthase subunit ATP5O. Contributes to the regulation of the cellular energy metabolism. Important for regulating tissue-specific ATP levels.

**Gene ID:**

SIRT3

**Uniprot**

Q9NTG7

**Synonyms:**

NAD-dependent protein deacetylase sirtuin-3, mitochondrial (hSIRT3) (EC 3.5.1. -)  
(Regulatory protein SIR2 homolog 3) (SIR2-like protein 3), SIRT3, SIR2L3

**Immunogen:**

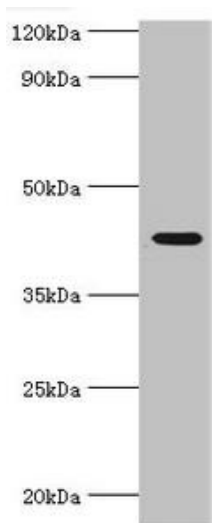
Recombinant Human NAD-dependent protein deacetylase sirtuin-3, mitochondrial protein (20-130AA).

**Storage:**

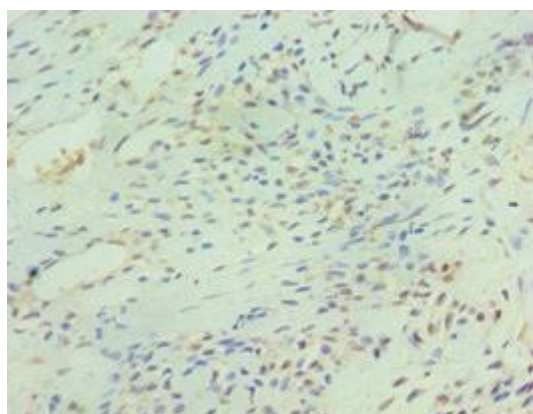
PBS with 0.02% sodium azide, 50% glycerol, pH7.3.

## Product Images

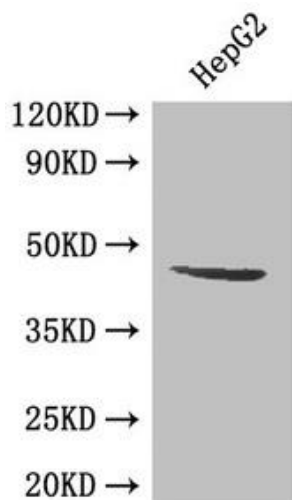
---



Western blot. All lanes: NAD-dependent protein deacetylase sirtuin-3, mitochondrial antibody at 1 $\mu$ g/ml + HepG2 whole cell lysate. Secondary. Goat polyclonal to rabbit IgG at 1/10000 dilution. Predicted band size: 44, 29 kDa. Observed band size: 44 kDa.



Immunohistochemistry of paraffin-embedded human breast cancer using PACO43376 at dilution of 1:100.



Western Blot. Positive WB detected in: HepG2 whole cell lysate. All lanes: SIRT3 antibody at 0.5 $\mu$ g/ml. Secondary. Goat polyclonal to rabbit IgG at 1/50000 dilution. Predicted band size: 44, 29 kDa. Observed band size: 44 kDa.